

PD1 Monoclonal Antibody

Description

Product type	Antibody
Code	BT-MCA3439
Host	Mouse
Isotype	Mouse IgG1
Size	100µL, 50µL
Immunogen	Purified recombinant fragment of human PD1 (AA: extra 21-170) expressed in HEK293 cells.
Mol wt	31.6KD
Species reactivity	Human
Clonality	Monoclonal
Recommended application	WB,FCM
Concentration	N/A
Full name	N/A
Synonyms	PDCD1;PD-1;CD279;SLEB2;hPD-1;hPD-I;hSLE1

This product is for research use only, not for use in human, therapeutic or diagnostic procedure.

Background

N/A

Recommended Dilution

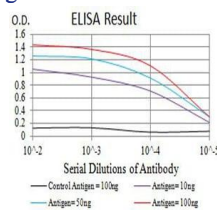
WB: 1:500 - 1:2000

FCM: 1:200 - 1:400

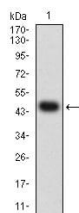
ELISA: 1:10000

Not yet tested in other applications.

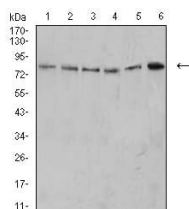
Images



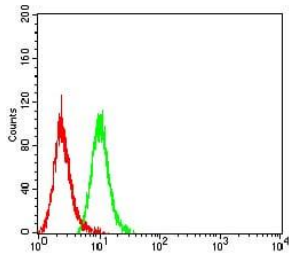
Black line: Control Antigen (100 ng);Purple line: Antigen (10ng); Blue line: Antigen (50 ng); Red line:Antigen (100 ng)



Western blot analysis using PD1 mAb against human PD1 (AA: extra 21-170) recombinant protein. (Expected MW is 46.6 kDa)



Western blot analysis using PD1 mouse mAb against MOLT4 (1), K562 (2), Ramos (3), HL-60 (4), THP-1 (5), and U937 (6) cell lysate.



Flow cytometric analysis of HeLa cells using PD1 mouse mAb (green) and negative control (red).

Storage

Store at 4°C short term. Aliquot and store at -20°C long term.

501 Changsheng S Rd, Nanhu Dist, Jiaxing, Zhejiang, China

Tel: 86 21 31007137 | E-mail: save@bt-laboratory.com | www.bt-laboratory.com