

ATG4B Monoclonal Antibody

Description

Product type	Antibody
Code	BT-MCA3454
Host	Mouse
Isotype	Mouse IgG1
Size	100µL, 50µL
Immunogen	Purified recombinant fragment of human ATG4B (AA: 1-221) expressed in E. Coli.
Mol wt	44.3kDa
Species reactivity	Others
Clonality	Monoclonal
Recommended application	WB,FCM
Concentration	N/A
Full name	N/A
Synonyms	APG4B;AUTL1

This product is for research use only, not for use in human, therapeutic or diagnostic procedure.

Background

Autophagy is the process by which endogenous proteins and damaged organelles are destroyed intracellularly. Autophagy is postulated to be essential for cell homeostasis and cell remodeling during differentiation, metamorphosis, non-apoptotic cell death, and aging. Reduced levels of autophagy have been described in some malignant tumors, and a role for autophagy in controlling the unregulated cell growth linked to cancer has been proposed. This gene encodes a member of the autophagin protein family. The encoded protein is also designated as a member of the C-54 family of cysteine proteases. Alternate transcriptional splice variants, encoding different isoforms, have been characterized. [provided by RefSeq, Jul 2008]

Recommended Dilution

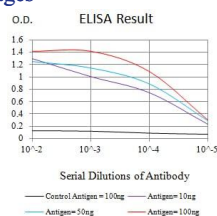
WB: 1:500 - 1:2000

FCM: 1:200 - 1:400

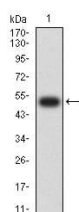
ELISA: 1:10000

Not yet tested in other applications.

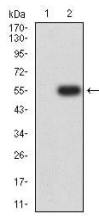
Images



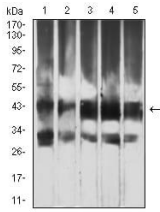
Black line: Control Antigen (100 ng);Purple line: Antigen (10ng); Blue line: Antigen (50 ng); Red line:Antigen (100 ng)



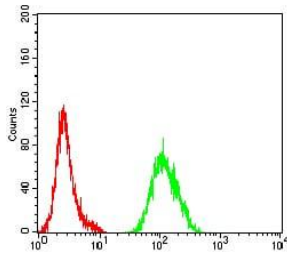
Western blot analysis using ATG4B mAb against human ATG4B (AA: 1-221) recombinant protein. (Expected MW is 51 kDa)



Western blot analysis using ATG4B mAb against HEK293 (1) and ATG4B (AA: 1-221)-hIgGfc transfected HEK293 (2) cell lysate.



Western blot analysis using ATG4B mouse mAb against HeLa (1), RAW264.7 (2), Ramos (3), Jurkat (4), and HepG2 (5) cell lysate.



Flow cytometric analysis of HeLa cells using ATG4B mouse mAb (green) and negative control (red).

Storage

Store at 4°C short term. Aliquot and store at -20°C long term.

501 Changsheng S Rd, Nanhu Dist, Jiaxing, Zhejiang, China

Tel: 86 21 31007137 | E-mail: save@bt-laboratory.com | www.bt-laboratory.com