

ALPG Monoclonal Antibody

Description

Product type	Antibody
Code	BT-MCA3456
Host	Mouse
Isotype	Mouse IgG1
Size	100µL, 50µL
Immunogen	Purified recombinant fragment of human ALPG (AA: 170-285) expressed in E. Coli.
Mol wt	57.3kDa
Species reactivity	Others
Clonality	Monoclonal
Recommended application	WB,IHC,FCM
Concentration	N/A
Full name	N/A
Synonyms	GCAP;ALPPL;ALPPL2

This product is for research use only, not for use in human, therapeutic or diagnostic procedure.

Background

There are at least four distinct but related alkaline phosphatases: intestinal, placental, placental-like, and liver/bone/kidney (tissue non-specific). The product of this gene is a membrane bound glycosylated enzyme, localized to testis, thymus and certain germ cell tumors, that is closely related to both the placental and intestinal forms of alkaline phosphatase.

Recommended Dilution

WB: 1:500 - 1:2000

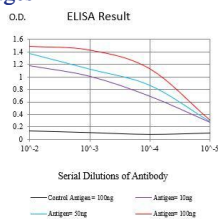
IHC-p: 1:200 - 1:1000

FCM: 1:200 - 1:400

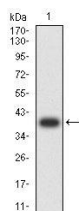
ELISA: 1:10000

Not yet tested in other applications.

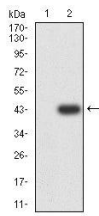
Images



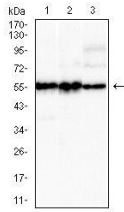
Black line: Control Antigen (100 ng); Purple line: Antigen (10ng); Blue line: Antigen (50 ng); Red line: Antigen (100 ng)



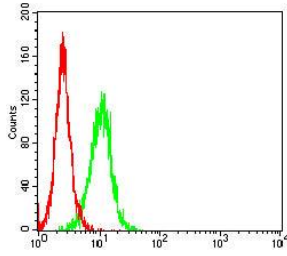
Western blot analysis using ALPG mAb against human ALPG (AA: 170-285) recombinant protein. (Expected MW is 38.8 kDa)



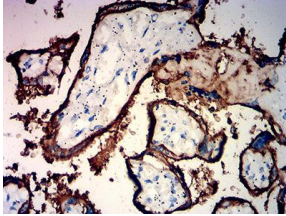
Western blot analysis using ALPG mAb against HEK293-6e (1) and ALPG (AA: 170-285)-hIgGFc transfected HEK293-6e (2) cell lysate.



Western blot analysis using ALPG mouse mAb against SK-OV-3 (1), Hela (2), and LOVO (3) cell lysate.



Flow cytometric analysis of U937 cells using ALPG mouse mAb (green) and negative control (red).



Immunohistochemical analysis of paraffin-embedded placenta tissues using ALPG mouse mAb with DAB staining.

Storage

Store at 4°C short term. Aliquot and store at -20°C long term.

501 Changsheng S Rd, Nanhu Dist, Jiaxing, Zhejiang, China

Tel: 86 21 31007137 | E-mail: save@bt-laboratory.com | www.bt-laboratory.com