

CD322 Monoclonal Antibody

Description

Product type	Antibody
Code	BT-MCA3462
Host	Mouse
Isotype	Mouse IgG1
Size	100µL, 50µL
Immunogen	Purified recombinant fragment of human CD322 (AA: extra 29-238) expressed in E. Coli.
Mol wt	33.2kDa
Species reactivity	Human
Clonality	Monoclonal
Recommended application	WB,ICC,FCM
Concentration	N/A
Full name	N/A
Synonyms	JAM2;JAMB;JAM-B;VEJAM;PRO245;VE-JAM;C21orf43

This product is for research use only, not for use in human, therapeutic or diagnostic procedure.

Background

This gene belongs to the immunoglobulin superfamily, and the junctional adhesion molecule (JAM) family. The protein encoded by this gene is a type I membrane protein that is localized at the tight junctions of both epithelial and endothelial cells. It acts as an adhesive ligand for interacting with a variety of immune cell types, and may play a role in lymphocyte homing to secondary lymphoid organs. Alternatively spliced transcript variants have been found for this gene.

Recommended Dilution

WB: 1:500 - 1:2000

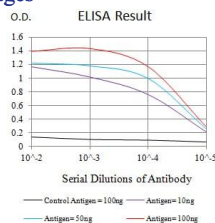
ICC: 1:100

FCM: 1:200 - 1:400

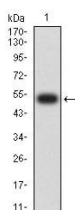
ELISA: 1:10000

Not yet tested in other applications.

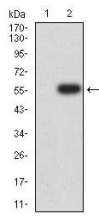
Images



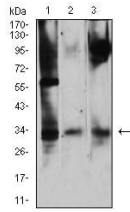
Black line: Control Antigen (100 ng);Purple line: Antigen (10ng); Blue line: Antigen (50 ng); Red line:Antigen (100 ng)



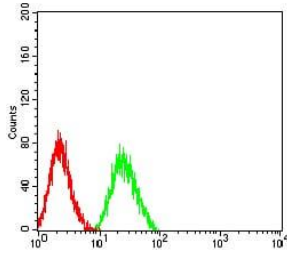
Western blot analysis using CD322 mAb against human CD322 (AA: extra 29-238) recombinant protein. (Expected MW is 53.3 kDa)



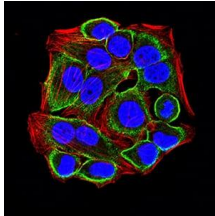
Western blot analysis using CD322 mAb against HEK293 (1) and CD322 (AA: extra 29-238)-hlgGFc transfected HEK293 (2) cell lysate.



Western blot analysis using CD322 mouse mAb against NIH/3T3 (1), Ramos (2), and HepG2 (3) cell lysate.



Flow cytometric analysis of HL-60 cells using CD322 mouse mAb (green) and negative control (red).



Immunofluorescence analysis of HeLa cells using CD322 mouse mAb (green). Blue: DRAQ5 fluorescent DNA dye. Red: Actin filaments have been labeled with Alexa Fluor- 555 phalloidin. Secondary antibody from Fisher (Cat#: 35503)

Storage

Store at 4°C short term. Aliquot and store at -20°C long term.

501 Changsheng S Rd, Nanhu Dist, Jiaxing, Zhejiang, China

Tel: 86 21 31007137 | E-mail: save@bt-laboratory.com | www.bt-laboratory.com