

OTUB2 Monoclonal Antibody

Description

Product type	Antibody
Code	BT-MCA3463
Host	Mouse
Isotype	Mouse IgG1
Size	100µL, 50µL
Immunogen	Purified recombinant fragment of human OTUB2 (AA: full(1-234)) expressed in E. Coli.
Mol wt	27KDa
Species reactivity	Human
Clonality	Monoclonal
Recommended application	ICC,FCM
Concentration	N/A
Full name	N/A
Synonyms	OTB2;OTU2;C14orf137

This product is for research use only, not for use in human, therapeutic or diagnostic procedure.

Background

N/A

Recommended Dilution

WB: 1:500 - 1:2000

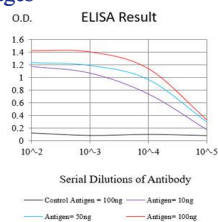
ICC: 1:200 - 1:1000

FCM: 1:200 - 1:400

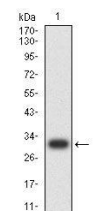
ELISA: 1:10000

Not yet tested in other applications.

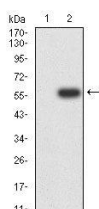
Images



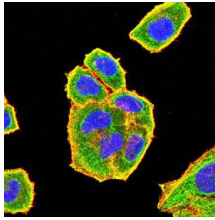
Black line: Control Antigen (100 ng);Purple line: Antigen (10ng); Blue line: Antigen (50 ng); Red line:Antigen (100 ng)



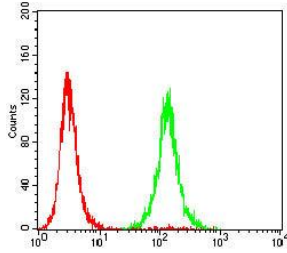
Western blot analysis using OTUB2 mAb against human OTUB2 (AA: full(1-234)) recombinant protein. (Expected MW is 30 kDa)



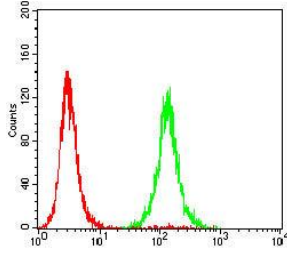
Western blot analysis using OTUB2 mAb against HEK293-6e (1) and OTUB2 (AA: full(1-234))-hlgGfC transfected HEK293-6e (2) cell lysate.



Immunofluorescence analysis of HeLa cells using OTUB2 mouse mAb (green). Blue: DRAQ5 fluorescent DNA dye. Red: Actin filaments have been labeled with Alexa Fluor- 555 phalloidin. Secondary antibody from Fisher (Cat#: 35503)



Flow cytometric analysis of HeLa cells using OTUB2 mouse mAb (green) and negative control (red).



Flow cytometric analysis of HepG2 cells using OTUB2 mouse mAb (green) and negative control (red).

Storage

Store at 4°C short term. Aliquot and store at -20°C long term.

501 Changsheng S Rd, Nanhu Dist, Jiaxing, Zhejiang, China

Tel: 86 21 31007137 | E-mail: save@bt-laboratory.com | www.bt-laboratory.com