

## SLC22A12 Monoclonal Antibody

### Description

<b>Product type</b>	Antibody
<b>Code</b>	BT-MCA3480
<b>Host</b>	Mouse
<b>Isotype</b>	Mouse IgG1
<b>Size</b>	100µL, 50µL
<b>Immunogen</b>	Purified recombinant fragment of human SLC22A12 (AA: 30-145) expressed in E. Coli.
<b>Mol wt</b>	59.6kDa
<b>Species reactivity</b>	Human,Mouse
<b>Clonality</b>	Monoclonal
<b>Recommended application</b>	WB,IHC,FCM
<b>Concentration</b>	N/A
<b>Full name</b>	N/A
<b>Synonyms</b>	RST;OAT4L;URAT1

This product is for research use only, not for use in human, therapeutic or diagnostic procedure.

### Background

The protein encoded by this gene is a member of the organic anion transporter (OAT) family, and it acts as a urate transporter to regulate urate levels in blood. This protein is an integral membrane protein primarily found in epithelial cells of the proximal tubule of the kidney. An elevated level of serum urate, hyperuricemia, is associated with increased incidences of gout, and mutations in this gene cause renal hypouricemia type 1. Alternative splicing results in multiple transcript variants.

### Recommended Dilution

WB: 1:500 - 1:2000

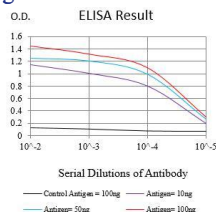
IHC-p: 1:200 - 1:1000

FCM: 1:200 - 1:400

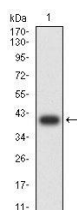
ELISA: 1:10000

Not yet tested in other applications.

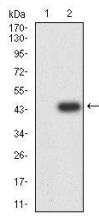
### Images



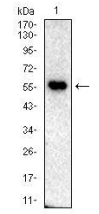
Black line: Control Antigen (100 ng);Purple line: Antigen (10ng); Blue line: Antigen (50 ng); Red line:Antigen (100 ng)



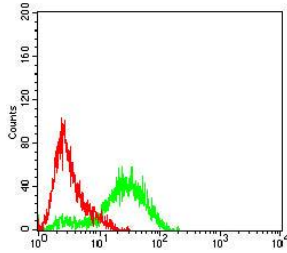
Western blot analysis using SLC22A12 mAb against human SLC22A12 (AA: 30-145) recombinant protein. (Expected MW is 38.8 kDa)



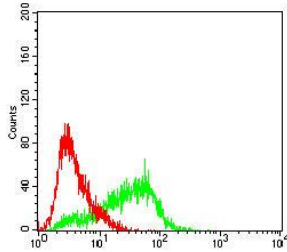
Western blot analysis using SLC22A12 mAb against HEK293-6e (1) and SLC22A12 (AA: 30-145)-hlgGFc transfected HEK293-6e (2) cell lysate.



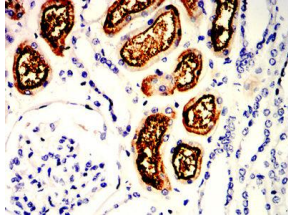
Western blot analysis using SLC22A12 mouse mAb against mouse kidney(1) tissue lysate.



Flow cytometric analysis of HeLa cells using SLC22A12 mouse mAb (green) and negative control (red).



Flow cytometric analysis of HepG2 cells using SLC22A12 mouse mAb (green) and negative control (red).



Immunohistochemical analysis of paraffin-embedded kidney tissues using SLC22A12 mouse mAb with DAB staining.

### Storage

Store at 4°C short term. Aliquot and store at -20°C long term.

501 Changsheng S Rd, Nanhui Dist, Jiading, Zhejiang, China

Tel: 86 21 31007137 | E-mail: [save@bt-laboratory.com](mailto:save@bt-laboratory.com) | [www.bt-laboratory.com](http://www.bt-laboratory.com)