

INHA (Inhibin alpha) Monoclonal Antibody

Description

Product type	Antibody
Code	BT-MCA3490
Host	Mouse
Isotype	Mouse IgG1
Size	100µL, 50µL
Immunogen	Purified recombinant fragment of human INHA expressed in E. Coli.
Mol wt	40kDa
Species reactivity	Human
Clonality	Monoclonal
Recommended application	IHC,ICC
Concentration	N/A
Full name	N/A
Synonyms	INHA;inhibin, alpha

This product is for research use only, not for use in human, therapeutic or diagnostic procedure.

Background

INHA (A-inhibin subunit precursor, inhibin alpha subunit), also called inhibin (alpha) ,which is located on chromosome 2q33-q36. Inhibin is a gonadal protein that preferentially suppresses the secretion of pituitary follicle-stimulating hormone (FSH). Inhibin comprises of two subunits,Inhibin A and B. Inhibin has been shown to regulate gonadal stromal cell proliferation negatively and to have tumor suppressor activity. In addition, serum levels of inhibin have been shown to reflect the size of granulosa cell tumors and can therefore be used as a marker for primary as well as recurrent disease. In addition to their role in endocrine feedback in the reproductive sytem, inhibins subserve local regulatory roles in numerous extragonadal tissues, including brain, adrenal, bone marrow, placenta, and most notably anterior pituitary. Inhibin alpha subunit gene expression is down regulated in human prostate cancer, suggesting a tumor suppressive role.

Recommended Dilution

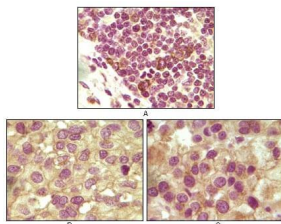
IHC-p: 1:200 - 1:1000

ICC: 1:200 - 1:1000

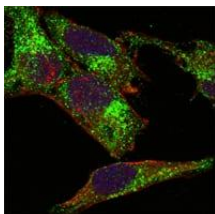
ELISA: 1:10000

Not yet tested in other applications.

Images



Immunohistochemical analysis of paraffin-embedded human lymphoid (A), ovary tumor (B) and testicle tumor (C) tissues using INHA mouse mAb with DAB staining.



Confocal Immunofluorescence analysis of HeLa cells using INHA mouse mAb (green). Red: Actin filaments have been labeled with DY-554 phalloidin. Blue: DRAQ5 fluorescent DNA dye.

Storage

Store at 4°C short term. Aliquot and store at -20°C long term.

501 Changsheng S Rd, Nanhu Dist, Jiaxing, Zhejiang, China

Tel: 86 21 31007137 | E-mail: save@bt-laboratory.com | www.bt-laboratory.com