

LRP8 Monoclonal Antibody

Description

Product type	Antibody
Code	BT-MCA3505
Host	Mouse
Isotype	Mouse IgG1
Size	100µL, 50µL
Immunogen	Purified recombinant fragment of human LRP8 (AA: extra 42-182) expressed in E. Coli.
Mol wt	105.6kDa
Species reactivity	Human
Clonality	Monoclonal
Recommended application	FCM
Concentration	N/A
Full name	N/A
Synonyms	MC11;LRP-8;APOER2;HSZ75190

This product is for research use only, not for use in human, therapeutic or diagnostic procedure.

Background

This gene encodes a member of the low density lipoprotein receptor (LDLR) family. Low density lipoprotein receptors are cell surface proteins that play roles in both signal transduction and receptor-mediated endocytosis of specific ligands for lysosomal degradation. The encoded protein plays a critical role in the migration of neurons during development by mediating Reelin signaling, and also functions as a receptor for the cholesterol transport protein apolipoprotein E. Expression of this gene may be a marker for major depressive disorder. Alternatively spliced transcript variants encoding multiple isoforms have been observed for this gene.

Recommended Dilution

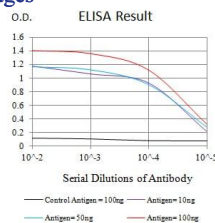
WB: 1:500 - 1:2000

FCM: 1:200 - 1:400

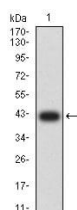
ELISA: 1:10000

Not yet tested in other applications.

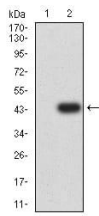
Images



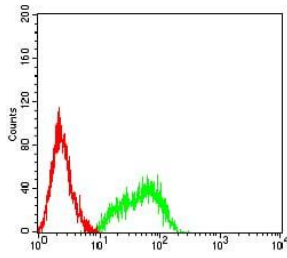
Black line: Control Antigen (100 ng);Purple line: Antigen (10ng); Blue line: Antigen (50 ng); Red line:Antigen (100 ng)



Western blot analysis using LRP8 mAb against human LRP8 (AA: extra 42-182) recombinant protein. (Expected MW is 41.4 kDa)



Western blot analysis using LRP8 mAb against HEK293 (1) and LRP8 (AA: extra 42-182)-hIgGFc transfected HEK293 (2) cell lysate.



Flow cytometric analysis of HL-60 cells using LRP8 mouse mAb (green) and negative control (red).

Storage

Store at 4°C short term. Aliquot and store at -20°C long term.

501 Changsheng S Rd, Nanhu Dist, Jiaxing, Zhejiang, China

Tel: 86 21 31007137 | E-mail: save@bt-laboratory.com | www.bt-laboratory.com