

SLC2A4 Monoclonal Antibody

Description

Product type	Antibody
Code	BT-MCA3508
Host	Mouse
Isotype	Mouse IgG2b
Size	100µL, 50µL
Immunogen	Purified recombinant fragment of human SLC2A4 (AA: 224-353) expressed in E. Coli.
Mol wt	54.8kDa
Species reactivity	Human,Mouse
Clonality	Monoclonal
Recommended application	IHC,ICC,FCM
Concentration	N/A
Full name	N/A
Synonyms	GLUT4

This product is for research use only, not for use in human, therapeutic or diagnostic procedure.

Background

N/A

Recommended Dilution

WB: 1:500 - 1:2000

IHC-p: 1:200 - 1:1000

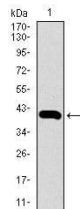
ICC: 1:200 - 1:1000

FCM: 1:200 - 1:400

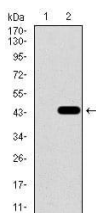
ELISA: 1:10000

Not yet tested in other applications.

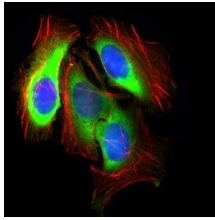
Images



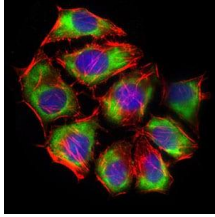
Western blot analysis using SLC2A4 mAb against human SLC2A4 recombinant protein. (Expected MW is 39.9 kDa)



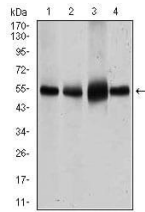
Western blot analysis using SLC2A4 mAb against HEK293 (1) and SLC2A4 (AA: 224-353)-hlgFc transfected HEK293 (2) cell lysate.



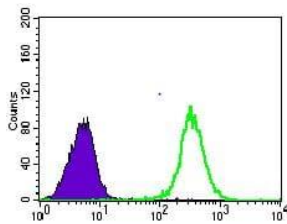
Immunofluorescence analysis of HeLa cells using SLC2A4 mouse mAb (green). Blue: DRAQ5 fluorescent DNA dye. Red: Actin filaments have been labeled with Alexa Fluor-555 phalloidin.



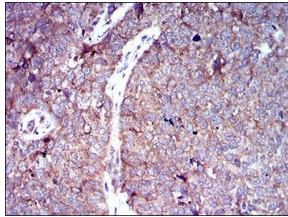
Immunofluorescence analysis of HepG2 cells using SLC2A4 mouse mAb (green). Blue: DRAQ5 fluorescent DNA dye. Red: Actin filaments have been labeled with Alexa Fluor-555 phalloidin.



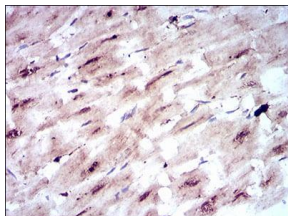
Western blot analysis using SLC2A4 mouse mAb against HeLa (1), NIH3T3 (2), 3T3-L1 (3) cell lysate and Mouse heart (4) tissue lysate.



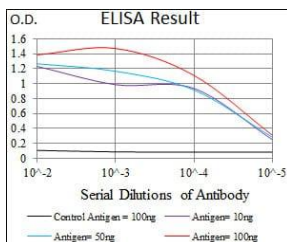
Flow cytometric analysis of HeLa cells using SLC2A4 mouse mAb (green) and negative control (purple).



Immunohistochemical analysis of paraffin-embedded bladder cancer tissues using SLC2A4 mouse mAb with DAB staining.



Immunohistochemical analysis of paraffin-embedded cardiac muscle tissues using SLC2A4 mouse mAb with DAB staining.



Black line: Control Antigen (100 ng); Purple line: Antigen(10ng); Blue line: Antigen (50 ng); Red line: Antigen (100 ng);

Storage

Store at 4°C short term. Aliquot and store at -20°C long term.

501 Changsheng S Rd, Nanhu Dist, Jiaxing, Zhejiang, China

Tel: 86 21 31007137 | E-mail: save@bt-laboratory.com | www.bt-laboratory.com