

PDE1B Monoclonal Antibody

Description

Product type	Antibody
Code	BT-MCA3512
Host	Mouse
Isotype	Mouse IgG1
Size	100μL, 50μL
Immunogen	Purified recombinant fragment of human PDE1B (AA: 370-536) expressed in E. Coli.
Mol wt	61.4kDa
Species reactivity	Human,Mouse,Monkey
Clonality	Monoclonal
Recommended application	FCM
Concentration	N/A
Full name	N/A
Synonyms	PDE1B1;PDES1B

This product is for research use only, not for use in human, therapeutic or diagnostic procedure.

Background

N/A

Recommended Dilution

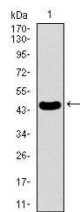
WB: 1:500 - 1:2000

FCM: 1:200 - 1:400

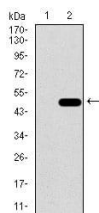
ELISA: 1:10000

Not yet tested in other applications.

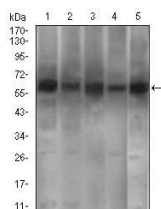
Images



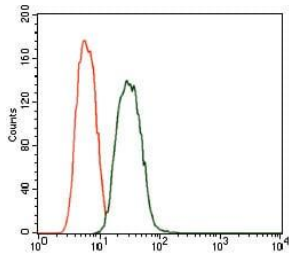
Western blot analysis using PDE1B mAb against human PDE1B recombinant protein. (Expected MW is 44.4 kDa)



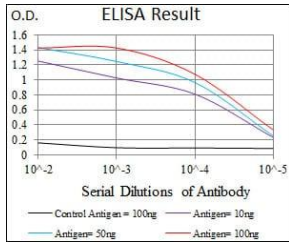
Western blot analysis using PDE1B mAb against HEK293 (1) and PDE1B (AA: 370-536)-hIgGfC transfected HEK293 (2) cell lysate.



Western blot analysis using PDE1B mouse mAb against A549 (1), SK-MES-1 (2), PC-12 (4), 3T3L1 (5) cell lysate and Mouse brain (3) tissue lysate.



Flow cytometric analysis of A549 cells using PDE1B mouse mAb (green) and negative control (red).



Black line: Control Antigen (100 ng); Purple line: Antigen(10ng); Blue line: Antigen (50 ng); Red line: Antigen (100 ng);

Storage

Store at 4°C short term. Aliquot and store at -20°C long term.

501 Changsheng S Rd, Nanhu Dist, Jiaxing, Zhejiang, China

Tel: 86 21 31007137 | E-mail: save@bt-laboratory.com | www.bt-laboratory.com