

BNP Monoclonal Antibody

Description

Product type	Antibody
Code	BT-MCA3519
Host	Mouse
Isotype	Mouse IgG1
Size	100µL, 50µL
Immunogen	Synthetic peptide corresponding to aa (Glu-Pro-Leu-Gln-Glu-Ser-Pro-Arg-Pro-Thr-Gly-Val-Trp-Cys) of human BNP, conjugated to KLH.
Mol wt	N/A
Species reactivity	Human
Clonality	Monoclonal
Recommended application	IHC
Concentration	N/A
Full name	N/A
Synonyms	BNP;NPPB

This product is for research use only, not for use in human, therapeutic or diagnostic procedure.

Background

BNP (brain natriuretic peptide) belongs to a family of structurally similar peptide hormones, which includes atrial natriuretic peptide (ANP), BNP, C-type natriuretic peptide (CNP) and urodilatin. ANP and BNP act mainly as cardiac hormones, produced primarily by the atrium and ventricle, respectively, while the gene encoding C-type natriuretic peptide is expressed mainly in the brain. BNP circulates in blood as a peptide hormone with natriuretic, vasodilatory and renin inhibitory properties. It is secreted predominantly by the left ventricular myocytes in response to volume expansion and pressure overload. These peptides are characterized by a common 17 amino acid ring structure with a disulfide bond between two cystein residues. This ring structure shows high homology between different natriuretic.

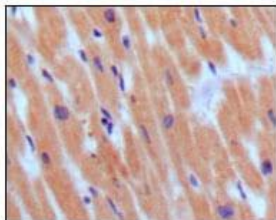
Recommended Dilution

IHC-p: 1:200 - 1:1000

ELISA: 1:10000

Not yet tested in other applications.

Images



Immunohistochemical analysis of paraffin-embedded human normal myocardium, showing cytoplasmic localization using BNP3 mouse mAb with DAB staining.

Storage

Store at 4°C short term. Aliquot and store at -20°C long term.