

## SHC1 Monoclonal Antibody

### Description

<b>Product type</b>	Antibody
<b>Code</b>	BT-MCA3526
<b>Host</b>	Mouse
<b>Isotype</b>	Mouse IgG1
<b>Size</b>	100µL, 50µL
<b>Immunogen</b>	Purified recombinant fragment of human SHC1 (AA: 385-495) expressed in E. Coli.
<b>Mol wt</b>	62.8kDa
<b>Species reactivity</b>	Human,Mouse
<b>Clonality</b>	Monoclonal
<b>Recommended application</b>	WB,ICC,FCM
<b>Concentration</b>	N/A
<b>Full name</b>	N/A
<b>Synonyms</b>	SHC;SHCA

This product is for research use only, not for use in human, therapeutic or diagnostic procedure.

### Background

This gene encodes three main isoforms that differ in activities and subcellular location. While all three are adapter proteins in signal transduction pathways, the longest (p66Shc) may be involved in regulating life span and the effects of reactive oxygen species. The other two isoforms, p52Shc and p46Shc, link activated receptor tyrosine kinases to the Ras pathway by recruitment of the GRB2/SOS complex. p66Shc is not involved in Ras activation. Unlike the other two isoforms, p46Shc is targeted to the mitochondrial matrix. Several transcript variants encoding different isoforms have been found for this gene.

### Recommended Dilution

WB: 1:500 - 1:2000

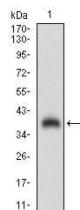
ICC: 1:200 - 1:1000

FCM: 1:200 - 1:400

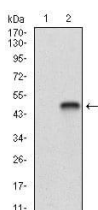
ELISA: 1:10000

Not yet tested in other applications.

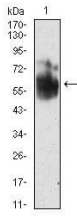
### Images



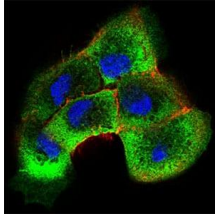
Western blot analysis using SHC1 mAb against human SHC1 (AA: 385-495) recombinant protein.  
(Expected MW is 37.3 kDa)



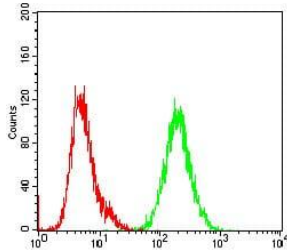
Western blot analysis using SHC1 mAb against HEK293 (1) and SHC1 (AA: 385-495)-hIgGfC transfected HEK293 (2) cell lysate.



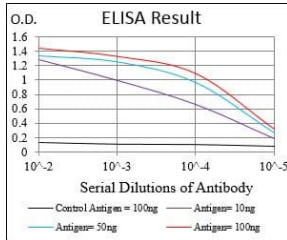
Western blot analysis using SHC1 mouse mAb against NIH/3T3 cell lysate.



Immunofluorescence analysis of A431 cells using SHC1 mouse mAb (green). Blue: DRAQ5 fluorescent DNA dye. Red: Actin filaments have been labeled with Alexa Fluor-555 phalloidin. Secondary antibody from Fisher (Cat#: 35503)



Flow cytometric analysis of NIH/3T3 cells using SHC1 mouse mAb (green) and negative control (red).



Black line: Control Antigen (100 ng); Purple line: Antigen(10ng); Blue line: Antigen (50 ng); Red line: Antigen (100 ng);

### Storage

Store at 4°C short term. Aliquot and store at -20°C long term.

501 Changsheng S Rd, Nanhu Dist, Jiaxing, Zhejiang, China

Tel: 86 21 31007137 | E-mail: save@bt-laboratory.com | www.bt-laboratory.com