

CD22 Monoclonal Antibody

Description

| | |
|--------------------------------|---|
| Product type | Antibody |
| Code | BT-MCA3527 |
| Host | Mouse |
| Isotype | Mouse IgG1 |
| Size | 100µL, 50µL |
| Immunogen | Purified recombinant fragment of human CD22 (AA: 621-725) expressed in E. Coli. |
| Mol wt | 95.3kDa |
| Species reactivity | Human |
| Clonality | Monoclonal |
| Recommended application | ICC,FCM |
| Concentration | N/A |
| Full name | N/A |
| Synonyms | SIGLEC2;SIGLEC-2 |

This product is for research use only, not for use in human, therapeutic or diagnostic procedure.

Background

N/A

Recommended Dilution

WB: 1:500 - 1:2000

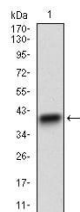
ICC: 1:200 - 1:1000

FCM: 1:200 - 1:400

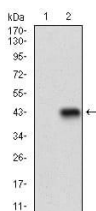
ELISA: 1:10000

Not yet tested in other applications.

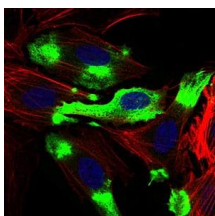
Images



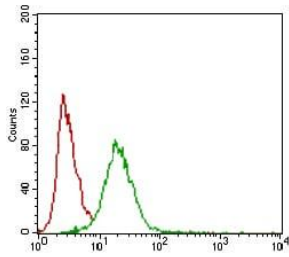
Western blot analysis using CD22 mAb against human CD22 recombinant protein. (Expected MW is 37 kDa)



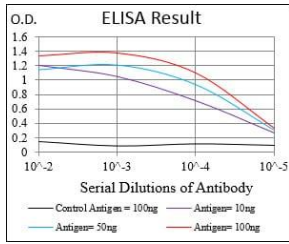
Western blot analysis using CD22 mAb against HEK293 (1) and CD22 (AA: 621-725)-hIgGfc transfected HEK293 (2) cell lysate.



Immunofluorescence analysis of HeLa cells using CD22 mouse mAb (green). Blue: DRAQ5 fluorescent DNA dye. Red: Actin filaments have been labeled with Alexa Fluor-555 phalloidin.



Flow cytometric analysis of HeLa cells using CD22 mouse mAb (green) and negative control (red).



Black line: Control Antigen (100 ng); Purple line: Antigen(10ng); Blue line: Antigen (50 ng); Red line: Antigen (100 ng);

Storage

Store at 4°C short term. Aliquot and store at -20°C long term.

501 Changsheng S Rd, Nanhu Dist, Jiaxing, Zhejiang, China

Tel: 86 21 31007137 | E-mail: save@bt-laboratory.com | www.bt-laboratory.com