

PLD2 Monoclonal Antibody

Description

Product type	Antibody
Code	BT-MCA3529
Host	Mouse
Isotype	Mouse IgG1
Size	100µL, 50µL
Immunogen	Purified recombinant fragment of human PLD2 (AA: 834-933) expressed in E. Coli.
Mol wt	106kDa
Species reactivity	Human
Clonality	Monoclonal
Recommended application	FCM
Concentration	N/A
Full name	N/A
Synonyms	N

This product is for research use only, not for use in human, therapeutic or diagnostic procedure.

Background

N/A

Recommended Dilution

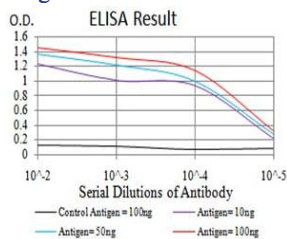
WB: 1:500 - 1:2000

FCM: 1:200 - 1:400

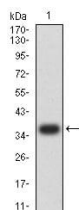
ELISA: 1:10000

Not yet tested in other applications.

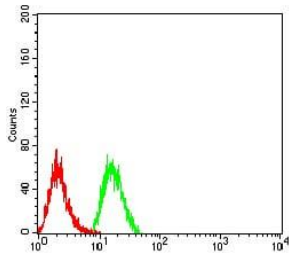
Images



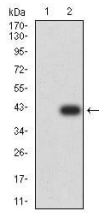
Black line: Control Antigen (100 ng);Purple line: Antigen (10ng); Blue line: Antigen (50 ng); Red line:Antigen (100 ng)



Western blot analysis using PLD2 mAb against human PLD2 (AA: 834-933) recombinant protein. (Expected MW is 37.4 kDa)



Flow cytometric analysis of HeLa cells using PLD2 mouse mAb (green) and negative control (red).



Western blot analysis using PLD2 mAb against HEK293 (1) and PLD2 (AA: 834-933)-hIgGFc transfected HEK293 (2) cell lysate.

Storage

Store at 4°C short term. Aliquot and store at -20°C long term.

501 Changsheng S Rd, Nanhu Dist, Jiaxing, Zhejiang, China

Tel: 86 21 31007137 | E-mail: save@bt-laboratory.com | www.bt-laboratory.com