

KID Monoclonal Antibody

Description

Product type	Antibody
Code	BT-MCA3538
Host	Mouse
Isotype	Mouse IgG1
Size	100µL, 50µL
Immunogen	Purified recombinant fragment of human KID expressed in E. Coli.
Mol wt	73kDa
Species reactivity	Human
Clonality	Monoclonal
Recommended application	IHC,FCM
Concentration	N/A
Full name	N/A
Synonyms	KIF22;KID;OBP;KNSL4;OBP-1;OBP-2;A-328A3.2

This product is for research use only, not for use in human, therapeutic or diagnostic procedure.

Background

The protein encoded by this gene is a member of kinesin-like protein family. This family of proteins are microtubule-dependent molecular motors that transport organelles within cells and move chromosomes during cell division. The C-terminal half of this protein has been shown to bind DNA. Studies with the *Xenopus* homolog suggests its essential role in metaphase chromosome alignment and maintenance.

Recommended Dilution

WB: 1:500 - 1:2000

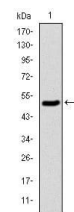
IHC-p: 1:200 - 1:1000

FCM: 1:200 - 1:400

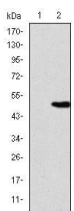
ELISA: 1:10000

Not yet tested in other applications.

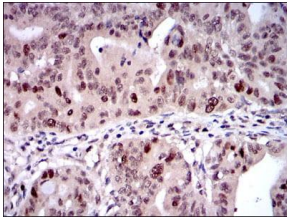
Images



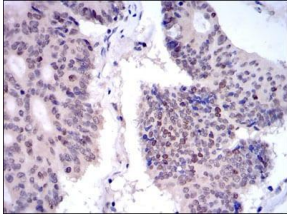
Western blot analysis using KID mAb against human KID (AA: 225-419) recombinant protein.
(Expected MW is 47 kDa)



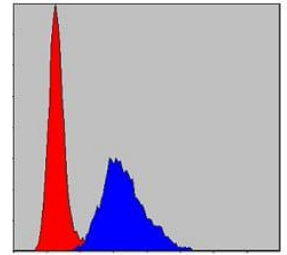
Western blot analysis using KID mAb against HEK293 (1) and KID(AA: 225-419)-hIgGfc transfected HEK293 (2) cell lysate.



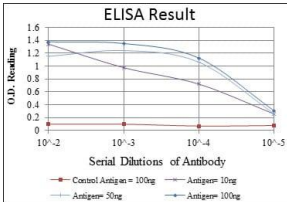
Immunohistochemical analysis of paraffin-embedded rectum cancer tissues using KID mouse mAb with DAB staining.



Immunohistochemical analysis of paraffin-embedded colon cancer tissues using KID mouse mAb with DAB staining.



Flow cytometric analysis of NIH/3T3 cells using KID mouse mAb (blue) and negative control (red).



Red: Control Antigen (100ng); Purple: Antigen (10ng); Green: Antigen (50ng); Blue: Antigen (100ng);

Storage

Store at 4°C short term. Aliquot and store at -20°C long term.

501 Changsheng S Rd, Nanhu Dist, Jiaxing, Zhejiang, China

Tel: 86 21 31007137 | E-mail: save@bt-laboratory.com | www.bt-laboratory.com