

PDXK Monoclonal Antibody

Description

Product type	Antibody
Code	BT-MCA3553
Host	Mouse
Isotype	Mouse IgG1
Size	100µL, 50µL
Immunogen	Purified recombinant fragment of human PDXK (AA:1-312) expressed in E. Coli.
Mol wt	35kDa
Species reactivity	Human,Mouse
Clonality	Monoclonal
Recommended application	WB,IHC,ICC,FCM
Concentration	N/A
Full name	N/A
Synonyms	PKH;PNK;HMSN6C;PRED79;C21orf97;HEL-S-1a;C21orf124

This product is for research use only, not for use in human, therapeutic or diagnostic procedure.

Background

The protein encoded by this gene phosphorylates vitamin B6, a step required for the conversion of vitamin B6 to pyridoxal-5-phosphate, an important cofactor in intermediary metabolism. The encoded protein is cytoplasmic and probably acts as a homodimer. Alternatively spliced transcript variants have been described, but their biological validity has not been determined.

Recommended Dilution

WB: 1:500 - 1:2000

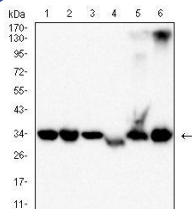
IHC-p: 1:200 - 1:1000

ICC: 1:50 - 1:200

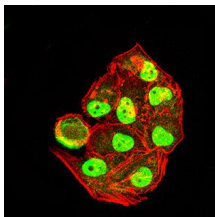
FCM: 1:200 - 1:400

Not yet tested in other applications.

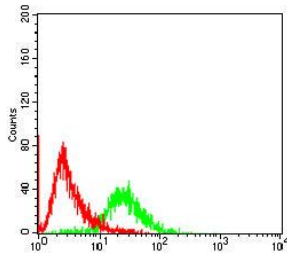
Images



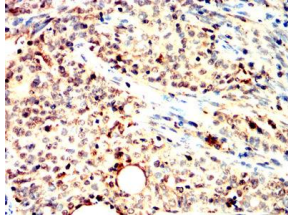
Western blot analysis using PDXK mouse mAb against Hela (1), HepG2 (2), MCF-7 (3), HEK293 (4), mouse liver (5) and mouse kidney (6) cell lysate.



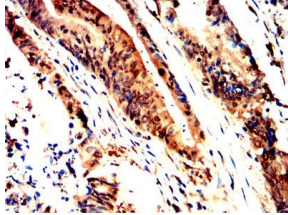
Immunofluorescence analysis of Hala cells using PDXK mouse mAb (green). Blue: DRAQ5 fluorescent DNA dye. Red: Actin filaments have been labeled with Alexa Fluor- 555 phalloidin. Secondary antibody from Fisher (Cat#: 35503)



Flow cytometric analysis of HEK293 cells using PDXK mouse mAb (green) and negative control (red).



Immunohistochemical analysis of paraffin-embedded cervical cancer tissues using PDXK mouse mAb with DAB staining.



Immunohistochemical analysis of paraffin-embedded colon cancer tissues using PDXK mouse mAb with DAB staining.

Storage

Store at 4°C short term. Aliquot and store at -20°C long term.

501 Changsheng S Rd, Nanhu Dist, Jiaxing, Zhejiang, China

Tel: 86 21 31007137 | E-mail: save@bt-laboratory.com | www.bt-laboratory.com