

GPR56 Monoclonal Antibody

Description

Product type	Antibody
Code	BT-MCA3561
Host	Mouse
Isotype	Mouse IgG1
Size	100µL, 50µL
Immunogen	Purified recombinant fragment of human GPR56 (AA: extra(26-225)) expressed in E. Coli.
Mol wt	77.7kDa
Species reactivity	Others
Clonality	Monoclonal
Recommended application	IHC,FCM
Concentration	N/A
Full name	N/A
Synonyms	BFPP;BPPR;ADGRG1;TM7LN4;TM7XN1

This product is for research use only, not for use in human, therapeutic or diagnostic procedure.

Background

This gene encodes a member of the G protein-coupled receptor family and regulates brain cortical patterning. The encoded protein binds specifically to transglutaminase 2, a component of tissue and tumor stroma implicated as an inhibitor of tumor progression. Mutations in this gene are associated with a brain malformation known as bilateral frontoparietal polymicrogyria. Alternative splicing results in multiple transcript variants.

Recommended Dilution

WB: 1:500 - 1:2000

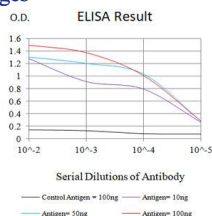
IHC-p: 1:200 - 1:1000

FCM: 1:200 - 1:400

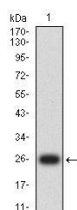
ELISA: 1:10000

Not yet tested in other applications.

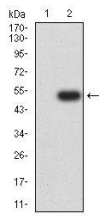
Images



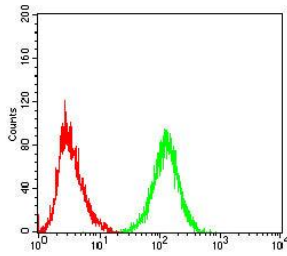
Black line: Control Antigen (100 ng);Purple line: Antigen (10ng); Blue line: Antigen (50 ng); Red line:Antigen (100 ng)



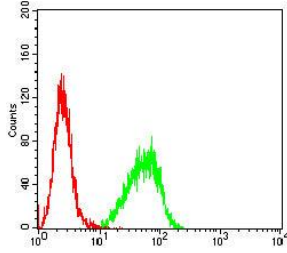
Western blot analysis using GPR56 mAb against human GPR56 (AA: extra(26-225)) recombinant protein. (Expected MW is 25.6kDa)



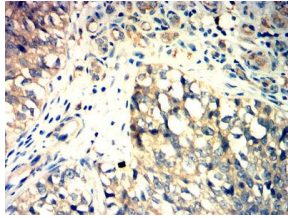
Western blot analysis using GPR56 mAb against HEK293-6e (1) and GPR56 (AA: extra(26-225))-hlgGfc transfected HEK293-6e (2) cell lysate.



Flow cytometric analysis of K562 cells using GPR56 mouse mAb (green) and negative control (red).



Flow cytometric analysis of THP-1 cells using GPR56 mouse mAb (green) and negative control (red).



Immunohistochemical analysis of paraffin-embedded bladder cancer tissues using GPR56 mouse mAb with DAB staining.

Storage

Store at 4°C short term. Aliquot and store at -20°C long term.

501 Changsheng S Rd, Nanhu Dist, Jiaxing, Zhejiang, China

Tel: 86 21 31007137 | E-mail: save@bt-laboratory.com | www.bt-laboratory.com