

TET2 Monoclonal Antibody

Description

Product type	Antibody
Code	BT-MCA3565
Host	Mouse
Isotype	Mouse IgG1
Size	100μL, 50μL
Immunogen	Purified recombinant fragment of human TET2 expressed in E. Coli.
Mol wt	223.8kDa
Species reactivity	Others
Clonality	Monoclonal
Recommended application	WB,IHC,ICC,FCM
Concentration	N/A
Full name	N/A
Synonyms	MDS;KIAA1546

This product is for research use only, not for use in human, therapeutic or diagnostic procedure.

Background

The protein encoded by this gene is a methylcytosine dioxygenase that catalyzes the conversion of methylcytosine to 5-hydroxymethylcytosine. The encoded protein is involved in myelopoiesis, and defects in this gene have been associated with several myeloproliferative disorders. Two variants encoding different isoforms have been found for this gene.

Recommended Dilution

WB: 1:500 - 1:2000

IHC-p: 1:200-1:1000

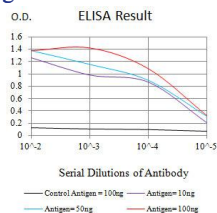
ICC: 1:200 - 1:1000

FCM: 1:200-1:400

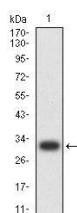
ELISA: 1:10000

Not yet tested in other applications.

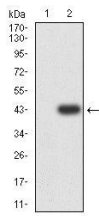
Images



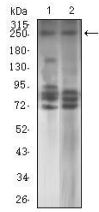
Black line: Control Antigen (100 ng);Purple line: Antigen (10ng); Blue line: Antigen (50 ng); Red line: Antigen (100 ng)



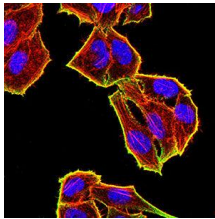
Western blot analysis using TET2 mAb against human TET2 recombinant protein. (Expected MW is 31 kDa)



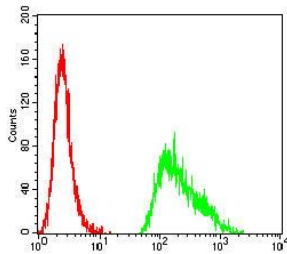
Western blot analysis using TET2 mAb against HEK293-6e (1) and TET2-hlgGfC transfected HEK293-6e (2) cell lysate.



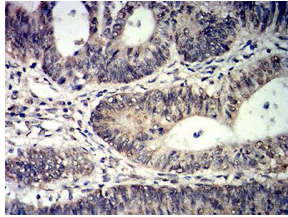
Western blot analysis using TET2 mouse mAb against HL-60 (1) and SK-N-SH (2) cell lysate.



Immunofluorescence analysis of HeLa cells using TET2 mouse mAb (green). Blue: DRAQ5 fluorescent DNA dye. Red: Actin filaments have been labeled with Alexa Fluor-555 phalloidin. Secondary antibody from Fisher (Cat#: 35503)



Flow cytometric analysis of HeLa cells using TET2 mouse mAb (green) and negative control (red).



Immunohistochemical analysis of paraffin-embedded rectum cancer tissues using TET2 mouse mAb with DAB staining.

Storage

Store at 4°C short term. Aliquot and store at -20°C long term.

501 Changsheng S Rd, Nanhu Dist, Jiaxing, Zhejiang, China

Tel: 86 21 31007137 | E-mail: save@bt-laboratory.com | www.bt-laboratory.com