

IghA1 Monoclonal Antibody

Description

Product type	Antibody
Code	BT-MCA3585
Host	Mouse
Isotype	Mouse IgG1
Size	100µL, 50µL
Immunogen	Purified recombinant fragment of human IghA1 (AA: 207-353) expressed in E. Coli.
Mol wt	37.6kDa
Species reactivity	Human,Mouse,Monkey
Clonality	Monoclonal
Recommended application	WB,IHC,ICC,FCM
Concentration	N/A
Full name	N/A
Synonyms	IgA1

This product is for research use only, not for use in human, therapeutic or diagnostic procedure.

Background

N/A

Recommended Dilution

WB: 1:500 - 1:2000

IHC-p: 1:200 - 1:1000

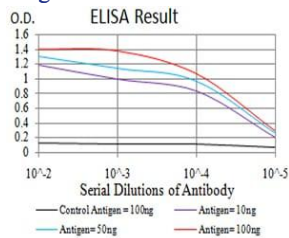
ICC: 1:50 - 1:250

FCM: 1:200 - 1:400

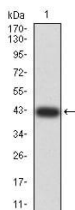
ELISA: 1:10000

Not yet tested in other applications.

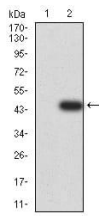
Images



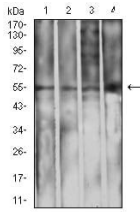
Black line: Control Antigen (100 ng);Purple line: Antigen (10ng); Blue line: Antigen (50 ng); Red line:Antigen (100 ng)



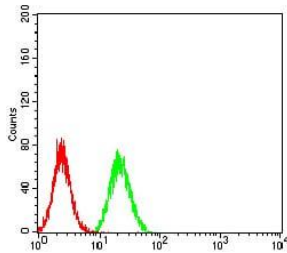
Western blot analysis using IghA1 mAb against human IghA1 (AA: 207-353) recombinant protein. (Expected MW is 41.7 kDa)



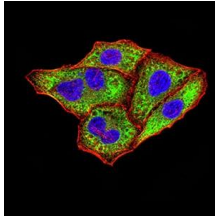
Western blot analysis using IghA1 mAb against HEK293 (1) and IghA1 (AA: 207-353)-hlgGFc transfected HEK293 (2) cell lysate.



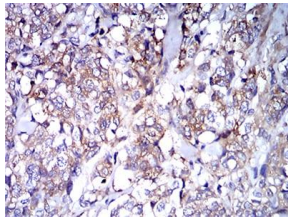
Western blot analysis using IghA1 mouse mAb against L1210 (1), THP-1 (2), HepG2 (3), and COS7 (4) cell lysate.



Flow cytometric analysis of HeLa cells using IghA1 mouse mAb (green) and negative control (red).



Immunofluorescence analysis of HeLa cells using IghA1 mouse mAb (green). Blue: DRAQ5 fluorescent DNA dye. Red: Actin filaments have been labeled with Alexa Fluor- 555 phalloidin. Secondary antibody from Fisher (Cat#: 35503)



Immunohistochemical analysis of paraffin-embedded breast cancer tissues using IghA1 mouse mAb with DAB staining.

Storage

Store at 4°C short term. Aliquot and store at -20°C long term.

501 Changsheng S Rd, Nanhu Dist, Jiaxing, Zhejiang, China

Tel: 86 21 31007137 | E-mail: save@bt-laboratory.com | www.bt-laboratory.com