

ADAM10 Monoclonal Antibody

Description

Product type	Antibody
Code	BT-MCA3602
Host	Mouse
Isotype	Mouse IgG1
Size	100µL, 50µL
Immunogen	Purified recombinant fragment of human ADAM10 (AA: EXTRA(20-119)) expressed in E. Coli.
Mol wt	84kDa
Species reactivity	Others
Clonality	Monoclonal
Recommended application	IHC,FCM
Concentration	N/A
Full name	N/A
Synonyms	RAK;kuz;AD10;AD18;MADM;CD156c;CDw156;HsT18717

This product is for research use only, not for use in human, therapeutic or diagnostic procedure.

Background

Members of the ADAM family are cell surface proteins with a unique structure possessing both potential adhesion and protease domains. This gene encodes an ADAM family member that cleaves many proteins including TNF-alpha and E-cadherin. Alternate splicing results in multiple transcript variants encoding different proteins that may undergo similar processing.

Recommended Dilution

WB: 1:500 - 1:2000

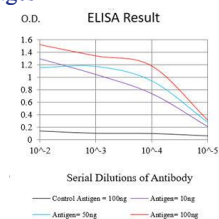
IHC-p: 1:200-1:1000

FCM: 1:200-1:400

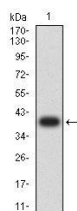
ELISA: 1:10000

Not yet tested in other applications.

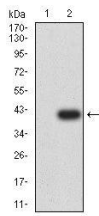
Images



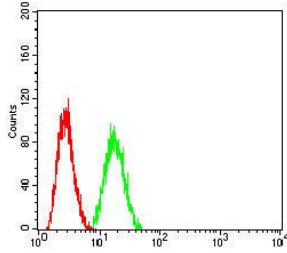
Black line: Control Antigen (100 ng);Purple line: Antigen (10ng); Blue line: Antigen (50 ng); Red line: Antigen (100 ng)



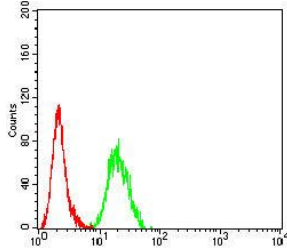
Western blot analysis using ADAM10 mAb against human ADAM10 (AA: EXTRA(20-119)) recombinant protein. (Expected MW is 37.7 kDa)



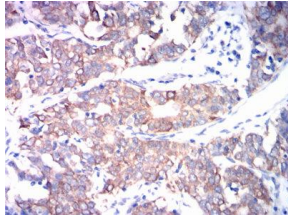
Western blot analysis using ADAM10 mAb against HEK293-6e (1) and ADAM10 (AA: EXTRA(20-119))-hIgGFc transfected HEK293-6e (2) cell lysate.



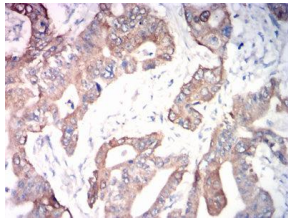
Flow cytometric analysis of HeLa cells using ADAM10 mouse mAb (green) and negative control (red).



Flow cytometric analysis of THP-1 cells using ADAM10 mouse mAb (green) and negative control (red).



Immunohistochemical analysis of paraffin-embedded cervical cancer tissues using ADAM10 mouse mAb with DAB staining.



Immunohistochemical analysis of paraffin-embedded rectal cancer tissues using ADAM10 mouse mAb with DAB staining.

Storage

Store at 4°C short term. Aliquot and store at -20°C long term.

501 Changsheng S Rd, Nanhui Dist, Jiaying, Zhejiang, China

Tel: 86 21 31007137 | E-mail: save@bt-laboratory.com | www.bt-laboratory.com