

P2RX7 Monoclonal Antibody

Description

Product type	Antibody
Code	BT-MCA3605
Host	Mouse
Isotype	Mouse IgG2b
Size	100µL, 50µL
Immunogen	Purified recombinant fragment of human P2RX7 (AA: 226-452) expressed in E. Coli.
Mol wt	68.6kDa
Species reactivity	Human
Clonality	Monoclonal
Recommended application	WB,IHC,FCM
Concentration	N/A
Full name	N/A
Synonyms	P2X7

This product is for research use only, not for use in human, therapeutic or diagnostic procedure.

Background

N/A

Recommended Dilution

WB: 1:500 - 1:2000

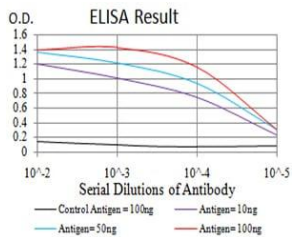
IHC-p: 1:200 - 1:1000

FCM: 1:200 - 1:400

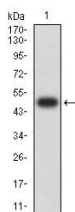
ELISA: 1:10000

Not yet tested in other applications.

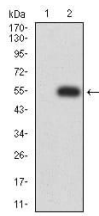
Images



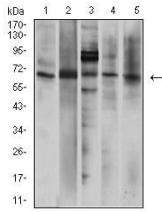
Black line: Control Antigen (100 ng);Purple line: Antigen (10ng); Blue line: Antigen (50 ng); Red line:Antigen (100 ng)



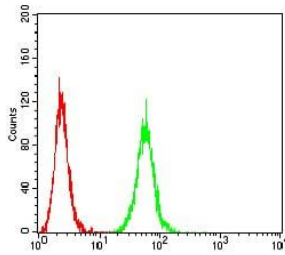
Western blot analysis using P2RX7 mAb against human P2RX7 (AA: 226-452) recombinant protein. (Expected MW is 48.9 kDa)



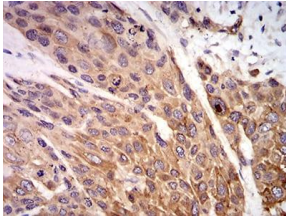
Western blot analysis using P2RX7 mAb against HEK293 (1) and P2RX7 (AA: 226-452)-hlgGFc transfected HEK293 (2) cell lysate.



Western blot analysis using P2RX7 mouse mAb against A431 (1), U251 (2), HeLa (3), U937 (4), and HepG2 (5) cell lysate.



Flow cytometric analysis of HeLa cells using P2RX7 mouse mAb (green) and negative control (red).



Immunohistochemical analysis of paraffin-embedded esophageal cancer tissues using P2RX7 mouse mAb with DAB staining.

Storage

Store at 4°C short term. Aliquot and store at -20°C long term.

501 Changsheng S Rd, Nanhu Dist, Jiaxing, Zhejiang, China

Tel: 86 21 31007137 | E-mail: save@bt-laboratory.com | www.bt-laboratory.com