

CDH1 Monoclonal Antibody

Description

Product type	Antibody
Code	BT-MCA3612
Host	Mouse
Isotype	Mouse IgG1
Size	100µL, 50µL
Immunogen	Purified recombinant fragment of human CDH1 (AA:extra(155-354)) expressed in E. Coli.
Mol wt	97.5kDa
Species reactivity	Others
Clonality	Monoclonal
Recommended application	WB,IHC,ICC,FCM
Concentration	N/A
Full name	N/A
Synonyms	UVO;CDHE;ECAD;LCAM;Arc-1;BCDS1;CD324

This product is for research use only, not for use in human, therapeutic or diagnostic procedure.

Background

This gene encodes a classical cadherin of the cadherin superfamily. Alternative splicing results in multiple transcript variants, at least one of which encodes a preproprotein that is proteolytically processed to generate the mature glycoprotein. This calcium-dependent cell-cell adhesion protein is comprised of five extracellular cadherin repeats, a transmembrane region and a highly conserved cytoplasmic tail. Mutations in this gene are correlated with gastric, breast, colorectal, thyroid and ovarian cancer. Loss of function of this gene is thought to contribute to cancer progression by increasing proliferation, invasion, and/or metastasis. The ectodomain of this protein mediates bacterial adhesion to mammalian cells and the cytoplasmic domain is required for internalization. This gene is present in a gene cluster with other members of the cadherin family on chromosome 16.

Recommended Dilution

WB: 1:500 - 1:2000

IHC-p: 1:200 - 1:1000

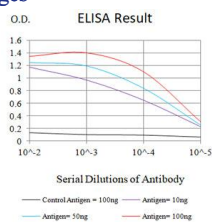
ICC: 1:200 - 1:1000

FCM: 1:200 - 1:400

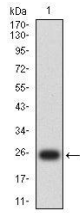
ELISA: 1:10000

Not yet tested in other applications.

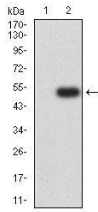
Images



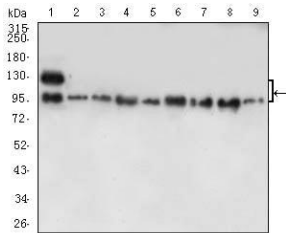
Black line: Control Antigen (100 ng);Purple line: Antigen (10ng); Blue line: Antigen (50 ng); Red line:Antigen (100 ng)



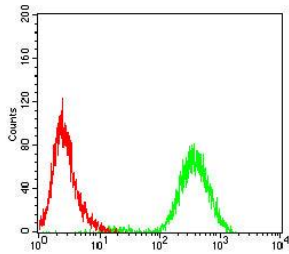
Western blot analysis using CDH1 mAb against human CDH1 (AA:extra(155-354)) recombinant protein. (Expected MW is 24.7 kDa)



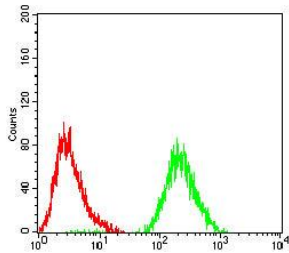
Western blot analysis using CDH1 mAb against HEK293-6e (1) and CDH1 (AA:extra(155-354))-hIgGFc transfected HEK293-6e (2) cell lysate.



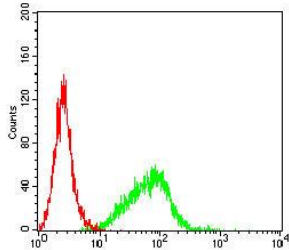
Western blot analysis using CDH1 mouse mAb against PC-3 (1), A431 (2), MCF-7 (3), HT-29 (4), HePG2 (5), C6 (6), A549 (7), NIH/3T3 (8), and C2C12 (9) cell lysate.



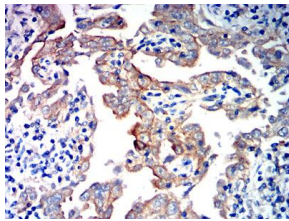
Flow cytometric analysis of HeLa cells using CDH1 mouse mAb (green) and negative control (red).



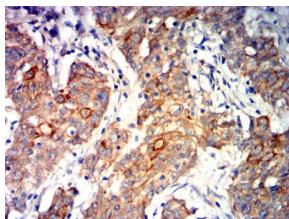
Flow cytometric analysis of HepG2 cells using CDH1 mouse mAb (green) and negative control (red).



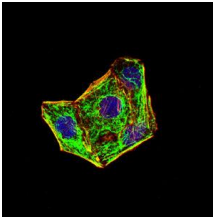
Flow cytometric analysis of HT-29 cells using CDH1 mouse mAb (green) and negative control (red).



Immunohistochemical analysis of paraffin-embedded endometrial cancer tissues using CDH1 mouse mAb with DAB staining.



Immunohistochemical analysis of paraffin-embedded stomach cancer tissues using CDH1 mouse mAb with DAB staining.



Immunofluorescence analysis of HeLa cells using CDH1 mouse mAb (green). Blue: DRAQ5 fluorescent DNA dye. Red: Actin filaments have been labeled with Alexa Fluor- 555 phalloidin. Secondary antibody from Fisher (Cat#: 35503)

Storage

Store at 4°C short term. Aliquot and store at -20°C long term.

501 Changsheng S Rd, Nanhu Dist, Jiaxing, Zhejiang, China

Tel: 86 21 31007137 | E-mail: save@bt-laboratory.com | www.bt-laboratory.com