

P4HB Monoclonal Antibody

Description

Product type	Antibody
Code	BT-MCA3621
Host	Mouse
Isotype	Mouse IgG2a
Size	100µL, 50µL
Immunogen	Purified recombinant fragment of human P4HB (AA: 309-508) expressed in Mammalian.
Mol wt	57.1kDa
Species reactivity	Others
Clonality	Monoclonal
Recommended application	WB,IHC,FCM
Concentration	N/A
Full name	N/A
Synonyms	DSI,GIT,PDI,PHDB,PDIA1,PO4DB,PO4HB,PROHB,CLCRP1,ERBA2L,P4Hbeta

This product is for research use only, not for use in human, therapeutic or diagnostic procedure.

Background

This gene encodes the beta subunit of prolyl 4-hydroxylase, a highly abundant multifunctional enzyme that belongs to the protein disulfide isomerase family. When present as a tetramer consisting of two alpha and two beta subunits, this enzyme is involved in hydroxylation of prolyl residues in procollagen. This enzyme is also a disulfide isomerase containing two thioredoxin domains that catalyze the formation, breakage and rearrangement of disulfide bonds. Other known functions include its ability to act as a chaperone that inhibits aggregation of misfolded proteins in a concentration-dependent manner, its ability to bind thyroid hormone, its role in both the influx and efflux of S-nitrosothiol-bound nitric oxide, and its function as a subunit of the microsomal triglyceride transfer protein complex.

Recommended Dilution

WB: 1:500 - 1:2000

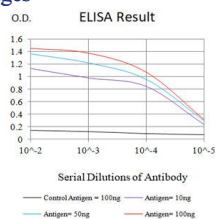
IHC-p: 1:200 - 1:1000

FCM: 1:200 - 1:400

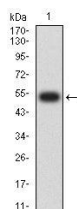
ELISA: 1:10000

Not yet tested in other applications.

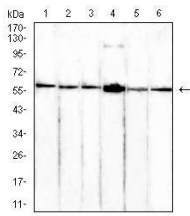
Images



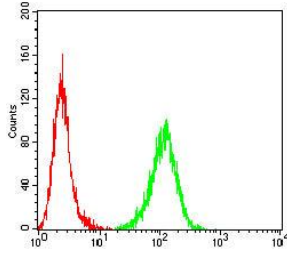
Black line: Control Antigen (100 ng);Purple line: Antigen (10ng); Blue line: Antigen (50 ng); Red line:Antigen (100 ng)



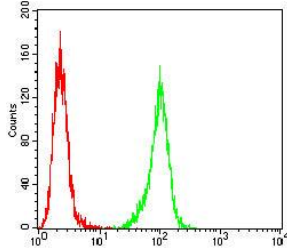
Western blot analysis using P4HB mAb against human P4HB (AA: 309-508) recombinant protein. (Expected MW is 53.5 kDa)



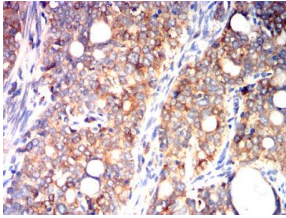
Western blot analysis using P4HB mouse mAb against Hela (1), PANC-1 (2), MCF-7 (3), THP-1 (4), SW620 (5), and HepG2 (6) cell lysate.



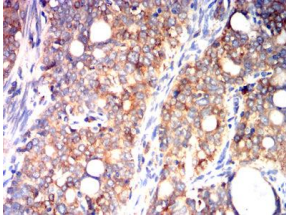
Flow cytometric analysis of A375 cells using P4HB mouse mAb (green) and negative control (red).



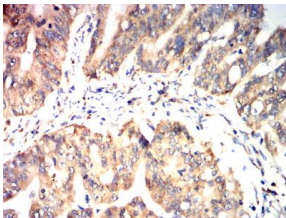
Flow cytometric analysis of Hela cells using P4HB mouse mAb (green) and negative control (red).



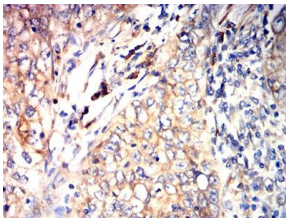
Immunohistochemical analysis of paraffin-embedded bladder cancer tissues using P4HB mouse mAb with DAB staining.



Immunohistochemical analysis of paraffin-embedded cervical cancer tissues using P4HB mouse mAb with DAB staining.



Immunohistochemical analysis of paraffin-embedded rectal cancer tissues using P4HB mouse mAb with DAB staining.



Immunohistochemical analysis of paraffin-embedded lung cancer tissues using P4HB mouse mAb with DAB staining.

Storage

Store at 4°C short term. Aliquot and store at -20°C long term.

501 Changsheng S Rd, Nanhui Dist, Jiaxing, Zhejiang, China

Tel: 86 21 31007137 | E-mail: save@bt-laboratory.com | www.bt-laboratory.com