

BCL6 Monoclonal Antibody

Description

Product type	Antibody
Code	BT-MCA3632
Host	Mouse
Isotype	Mouse IgG1
Size	100µL, 50µL
Immunogen	Purified recombinant fragment of human BCL6 (AA: 507-706) expressed in E. Coli.
Mol wt	78.8KDa
Species reactivity	Human
Clonality	Monoclonal
Recommended application	WB,IHC,ICC,FCM
Concentration	N/A
Full name	N/A
Synonyms	BCL5;LAZ3;BCL6A;ZNF51;ZBTB27

This product is for research use only, not for use in human, therapeutic or diagnostic procedure.

Background

The protein encoded by this gene is a zinc finger transcription factor and contains an N-terminal POZ domain. This protein acts as a sequence-specific repressor of transcription, and has been shown to modulate the transcription of STAT-dependent IL-4 responses of B cells. This protein can interact with a variety of POZ-containing proteins that function as transcription corepressors. This gene is found to be frequently translocated and hypermutated in diffuse large-cell lymphoma (DLCL), and may be involved in the pathogenesis of DLCL. Alternatively spliced transcript variants encoding different protein isoforms have been found for this gene.

Recommended Dilution

WB: 1:500 - 1:2000

IHC-p: 1:200 - 1:1000

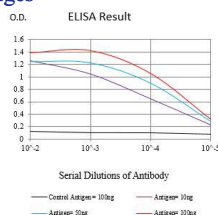
ICC: 1:200 - 1:1000

FCM: 1:200 - 1:400

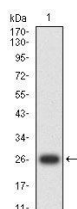
ELISA: 1:10000

Not yet tested in other applications.

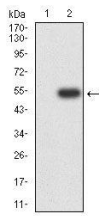
Images



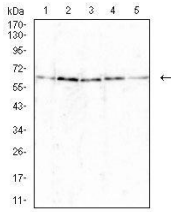
Black line: Control Antigen (100 ng);Purple line: Antigen (10ng); Blue line: Antigen (50 ng); Red line:Antigen (100 ng)



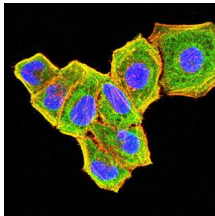
Western blot analysis using BCL6 mAb against human BCL6 (AA: 507-706) recombinant protein. (Expected MW is 26 kDa)



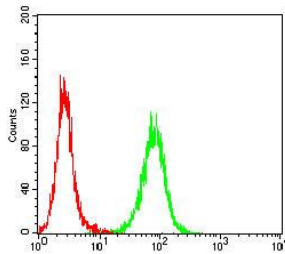
Western blot analysis using BCL6 mAb against HEK293-6e (1) and BCL6 (AA: 507-706)-hIgGfc transfected HEK293-6e (2) cell lysate.



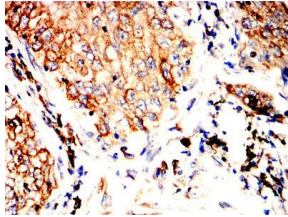
Western blot analysis using BCL6 mouse mAb against Jurkat (1), K562 (2), Raji (3), Ramos (4) and MOLT-4 (5) cell lysate.



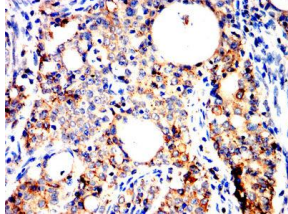
Immunofluorescence analysis of HeLa cells using BCL6 mouse mAb (green). Blue: DRAQ5 fluorescent DNA dye. Red: Actin filaments have been labeled with Alexa Fluor-555 phalloidin. Secondary antibody from Fisher (Cat#: 35503)



Flow cytometric analysis of HL-60 cells using BCL6 mouse mAb (green) and negative control (red).



Immunohistochemical analysis of paraffin-embedded lung cancer tissues using BCL6 mouse mAb with DAB staining.



Immunohistochemical analysis of paraffin-embedded cervical carcinoma tissues using BCL6 mouse mAb with DAB staining.

Storage

Store at 4°C short term. Aliquot and store at -20°C long term.

501 Changsheng S Rd, Nanhu Dist, Jiaxing, Zhejiang, China

Tel: 86 21 31007137 | E-mail: save@bt-laboratory.com | www.bt-laboratory.com