

PRKACG Monoclonal Antibody

Description

Product type	Antibody
Code	BT-MCA3658
Host	Mouse
Isotype	Mouse IgG1
Size	100 μ L, 50 μ L
Immunogen	Purified recombinant fragment of human PRKACG expressed in E. Coli.
Mol wt	40.4kDa
Species reactivity	Human
Clonality	Monoclonal
Recommended application	IHC,FCM
Concentration	N/A
Full name	N/A
Synonyms	KAPG;PKACg

This product is for research use only, not for use in human, therapeutic or diagnostic procedure.

Background

Cyclic AMP-dependent protein kinase (PKA) consists of two catalytic subunits and a regulatory subunit dimer. This gene encodes the gamma form of its catalytic subunit. The gene is intronless and is thought to be a retrotransposon derived from the gene for the alpha form of the PKA catalytic subunit.

Recommended Dilution

WB: 1:500 - 1:2000

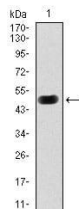
IHC-p: 1:200 - 1:1000

FCM: 1:200 - 1:400

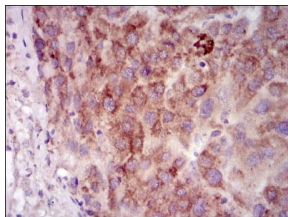
ELISA: 1:10000

Not yet tested in other applications.

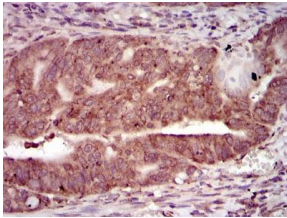
Images



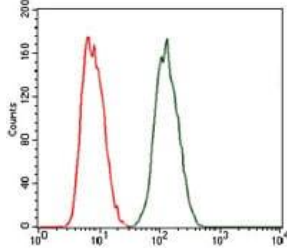
Western blot analysis using PRKACG mAb against human PRKACG (AA: 164-351) recombinant protein. (Expected MW is 47.1 kDa)



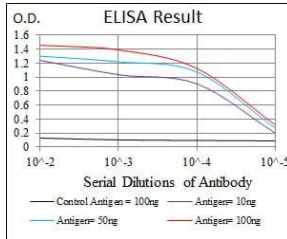
Immunohistochemical analysis of paraffin-embedded liver cancer tissues using PRKACG mouse mAb with DAB staining.



Immunohistochemical analysis of paraffin-embedded rectum cancer tissues using PRKACG mouse mAb with DAB staining.



Flow cytometric analysis of MCF-7 cells using PRKACG mouse mAb (green) and negative control (red).



Black line: Control Antigen (100 ng); Purple line: Antigen(10ng); Blue line: Antigen (50 ng); Red line: Antigen (100 ng);

Storage

Store at 4°C short term. Aliquot and store at -20°C long term.

501 Changsheng S Rd, Nanhu Dist, Jiaxing, Zhejiang, China

Tel: 86 21 31007137 | E-mail: save@bt-laboratory.com | www.bt-laboratory.com