

## SERPINA1 Monoclonal Antibody

### Description

<b>Product type</b>	Antibody
<b>Code</b>	BT-MCA3663
<b>Host</b>	Mouse
<b>Isotype</b>	Mouse IgG1
<b>Size</b>	100µL, 50µL
<b>Immunogen</b>	Purified recombinant fragment of human SERPINA1 (AA: 269-419) expressed in E. Coli.
<b>Mol wt</b>	46.7kDa
<b>Species reactivity</b>	Others
<b>Clonality</b>	Monoclonal
<b>Recommended application</b>	IHC
<b>Concentration</b>	N/A
<b>Full name</b>	N/A
<b>Synonyms</b>	PI;A1A;AAT;PI1;A1AT;nNIF;PRO2275;alpha1AT

This product is for research use only, not for use in human, therapeutic or diagnostic procedure.

### Background

The protein encoded by this gene is secreted and is a serine protease inhibitor whose targets include elastase, plasmin, thrombin, trypsin, chymotrypsin, and plasminogen activator. Defects in this gene can cause emphysema or liver disease. Several transcript variants encoding the same protein have been found for this gene.

### Recommended Dilution

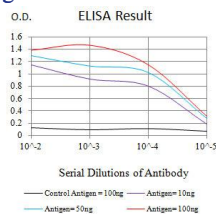
WB: 1:500 - 1:2000

IHC-p: 1:200-1:1000

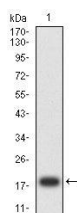
ELISA: 1:10000

Not yet tested in other applications.

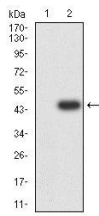
### Images



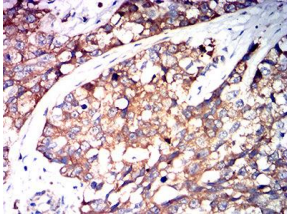
Black line: Control Antigen (100 ng);Purple line: Antigen (10ng); Blue line: Antigen (50 ng); Red line: Antigen (100 ng)



Western blot analysis using SERPINA1 mAb against human SERPINA1 (AA: 269-419) recombinant protein. (Expected MW is 19.3 kDa)



Western blot analysis using SERPINA1 mAb against HEK293 (1) and SERPINA1 (AA: 269-419)-hlgGfc transfected HEK293 (2) cell lysate.



Immunohistochemical analysis of paraffin-embedded bladder cancer tissues using SERPINA1 mouse mAb with DAB staining.

### Storage

Store at 4°C short term. Aliquot and store at -20°C long term.

501 Changsheng S Rd, Nanhu Dist, Jiaxing, Zhejiang, China

Tel: 86 21 31007137 | E-mail: [save@bt-laboratory.com](mailto:save@bt-laboratory.com) | [www.bt-laboratory.com](http://www.bt-laboratory.com)