

ABCA1 Monoclonal Antibody

Description

Product type	Antibody
Code	BT-MCA3682
Host	Mouse
Isotype	Mouse IgG2a
Size	100µL, 50µL
Immunogen	Purified recombinant fragment of human ABCA1 (AA: 2081-2261) expressed in E. Coli.
Mol wt	254 kDa
Species reactivity	Others
Clonality	Monoclonal
Recommended application	ICC,FCM
Concentration	N/A
Full name	N/A
Synonyms	TGD;ABC1;CERP;ABC-1;HDLDT1;HPALP1;HDLQCOTL13

This product is for research use only, not for use in human, therapeutic or diagnostic procedure.

Background

The membrane-associated protein encoded by this gene is a member of the superfamily of ATP-binding cassette (ABC) transporters. ABC proteins transport various molecules across extra- and intracellular membranes. ABC genes are divided into seven distinct subfamilies (ABC1, MDR/TAP, MRP, ALD, OABP, GCN20, White). This protein is a member of the ABC1 subfamily. Members of the ABC1 subfamily comprise the only major ABC subfamily found exclusively in multicellular eukaryotes. With cholesterol as its substrate, this protein functions as a cholesterol efflux pump in the cellular lipid removal pathway. Mutations in both alleles of this gene cause Tangier disease and familial high-density lipoprotein (HDL) deficiency.

Recommended Dilution

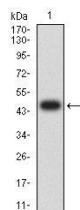
WB: 1:500 - 1:2000

ICC: 1:200 - 1:1000

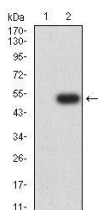
FCM: 1:200 - 1:400

Not yet tested in other applications.

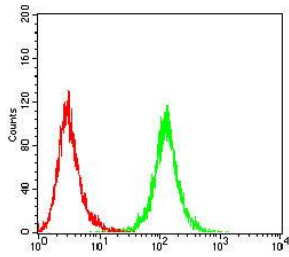
Images



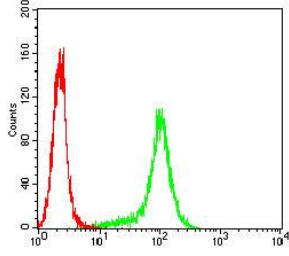
Western blot analysis using ABCA1 mAb against human ABCA1 (AA: 2081-2261) recombinant protein. (Expected MW is 46.4 kDa)



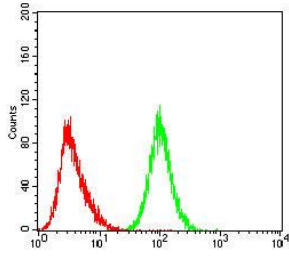
Western blot analysis using ABCA1 mAb against HEK293-6e (1) and ABCA1 (AA: 2081-2261)-hIgGFc transfected HEK293-6e (2) cell lysate.



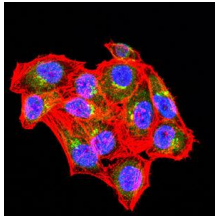
Flow cytometric analysis of bel-7402 cells using ABCA1 mouse mAb (green) and negative control (red).



Flow cytometric analysis of Hela cells using ABCA1 mouse mAb (green) and negative control (red).



Flow cytometric analysis of Hepg2 cells using ABCA1 mouse mAb (green) and negative control (red).



Immunofluorescence analysis of Hela cells using ABCA1 mouse mAb (green). Blue: DRAQ5 fluorescent DNA dye. Red: Actin filaments have been labeled with Alexa Fluor- 555 phalloidin. Secondary antibody from Fisher (Cat#: 35503)

Storage

Store at 4°C short term. Aliquot and store at -20°C long term.

501 Changsheng S Rd, Nanhu Dist, Jiaxing, Zhejiang, China

Tel: 86 21 31007137 | E-mail: save@bt-laboratory.com | www.bt-laboratory.com