

CWP1 Monoclonal Antibody

Description

Product type	Antibody
Code	BT-MCA3711
Host	Mouse
Isotype	Mouse IgG1
Size	100μL, 50μL
Immunogen	Purified recombinant fragment of human CWP1 (AA: 1-241) expressed in E. Coli.
Mol wt	N/A
Species reactivity	N/A
Clonality	Monoclonal
Recommended application	Others
Concentration	N/A
Full name	N/A
Synonyms	N/A

This product is for research use only, not for use in human, therapeutic or diagnostic procedure.

Background

Giardia lamblia ATCC 50803

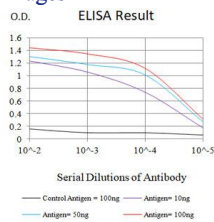
Recommended Dilution

WB: 1:500 - 1:2000

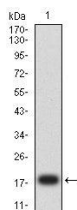
ELISA: 1:10000

Not yet tested in other applications.

Images



Black line: Control Antigen (100 ng); Purple line: Antigen (10ng); Blue line: Antigen (50 ng); Red line: Antigen (100 ng)



Western blot analysis using CWP1 mAb against human CWP1 (AA: 1-241) recombinant protein. (Expected MW is 51.5 kDa)

Storage

Store at 4°C short term. Aliquot and store at -20°C long term.