

## SAG2 Monoclonal Antibody

### Description

<b>Product type</b>	Antibody
<b>Code</b>	BT-MCA3717
<b>Host</b>	Mouse
<b>Isotype</b>	Mouse IgG1
<b>Size</b>	100µL, 50µL
<b>Immunogen</b>	Purified recombinant fragment of <i>Toxoplasma gondii</i> surface antigen 2B SAG2 (AA: 1-130) expressed in <i>E. Coli</i> .
<b>Mol wt</b>	13.4kDa
<b>Species reactivity</b>	Human
<b>Clonality</b>	Monoclonal
<b>Recommended application</b>	WB,FCM
<b>Concentration</b>	N/A
<b>Full name</b>	N/A
<b>Synonyms</b>	<i>Toxoplasma gondii</i> surface antigen 2B

This product is for research use only, not for use in human, therapeutic or diagnostic procedure.

### Background

N/A

### Recommended Dilution

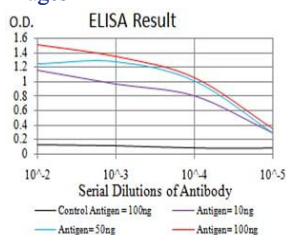
WB: 1:500 - 1:2000

FCM: 1:200 - 1:400

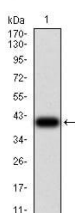
ELISA: 1:10000

Not yet tested in other applications.

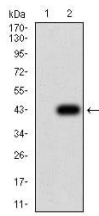
### Images



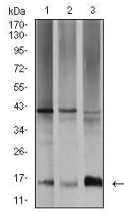
Black line: Control Antigen (100 ng);Purple line: Antigen (10ng); Blue line: Antigen (50 ng); Red line:Antigen (100 ng)



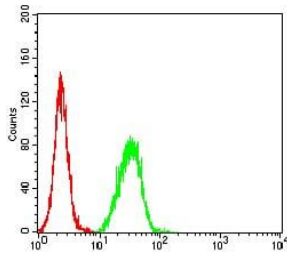
Western blot analysis using SAG2 mAb against *Toxoplasma gondii* surface antigen 2B SAG2 (AA: 1-130) recombinant protein. (Expected MW is 39.3 kDa)



Western blot analysis using SAG2 mAb against HEK293 (1) and SAG2 (AA: 1-130)-hIgGFc transfected HEK293 (2) cell lysate.



Western blot analysis using SAG2 mouse mAb against SW480 (1), A431 (2), and K562 (3) cell lysate.



Flow cytometric analysis of HeLa cells using SAG2 mouse mAb (green) and negative control (red).

### Storage

Store at 4°C short term. Aliquot and store at -20°C long term.

501 Changsheng S Rd, Nanhu Dist, Jiaxing, Zhejiang, China

Tel: 86 21 31007137 | E-mail: [save@bt-laboratory.com](mailto:save@bt-laboratory.com) | [www.bt-laboratory.com](http://www.bt-laboratory.com)