

CD38 Monoclonal Antibody

Description

Product type	Antibody
Code	BT-MCA3735
Host	Mouse
Isotype	Mouse IgG1
Size	100μL, 50μL
Immunogen	Purified recombinant fragment of human CD38 (AA: Extra(43-300)) expressed in E. Coli.
Mol wt	34.3kDa
Species reactivity	Human
Clonality	Monoclonal
Recommended application	WB,IHC
Concentration	N/A
Full name	N/A
Synonyms	T10;ADPRC 1

This product is for research use only, not for use in human, therapeutic or diagnostic procedure.

Background

CD38 is a novel multifunctional ectoenzyme widely expressed in cells and tissues especially in leukocytes. CD38 also functions in cell adhesion, signal transduction and calcium signaling.

Recommended Dilution

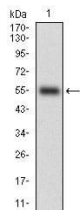
WB: 1:500 - 1:2000

IHC-p: 1:200 - 1:1000

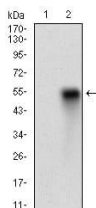
ELISA: 1:10000

Not yet tested in other applications.

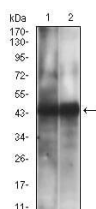
Images



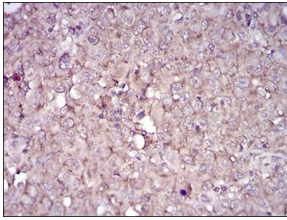
Western blot analysis using CD38 mAb against human CD38 (AA: Extra(43-300)) recombinant protein. (Expected MW is 56.1 kDa)



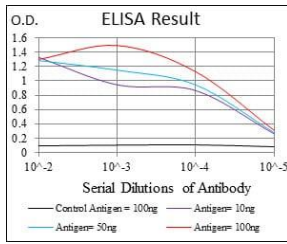
Western blot analysis using CD38 mAb against HEK293 (1) and CD38 (AA: Extra(43-300))-hIgGFc transfected HEK293 (2) cell lysate.



Western blot analysis using CD38 mouse mAb against HEK293 (1), LNcap (2) cell lysate.



Immunohistochemical analysis of paraffin-embedded endometrial cancer tissues using CD38 mouse mAb with DAB staining.



Black line: Control Antigen (100 ng); Purple line: Antigen(10ng); Blue line: Antigen (50 ng); Red line: Antigen (100 ng);

Storage

Store at 4°C short term. Aliquot and store at -20°C long term.

501 Changsheng S Rd, Nanhu Dist, Jiaxing, Zhejiang, China

Tel: 86 21 31007137 | E-mail: save@bt-laboratory.com | www.bt-laboratory.com