

MSLN Monoclonal Antibody

Description

Product type	Antibody
Code	BT-MCA3741
Host	Mouse
Isotype	Mouse IgG1
Size	100µL, 50µL
Immunogen	Purified recombinant fragment of human MSLN (AA: 296-606) expressed in E. Coli.
Mol wt	69kDa
Species reactivity	Others
Clonality	Monoclonal
Recommended application	WB
Concentration	N/A
Full name	N/A
Synonyms	MPF;SMRP

This product is for research use only, not for use in human, therapeutic or diagnostic procedure.

Background

This gene encodes a preproprotein that is proteolytically processed to generate two protein products, megakaryocyte potentiating factor and mesothelin. Megakaryocyte potentiating factor functions as a cytokine that can stimulate colony formation of bone marrow megakaryocytes. Mesothelin is a glycosylphosphatidylinositol-anchored cell-surface protein that may function as a cell adhesion protein. This protein is overexpressed in epithelial mesotheliomas, ovarian cancers and in specific squamous cell carcinomas. Alternative splicing results in multiple transcript variants, at least one of which encodes an isoform that is proteolytically processed.

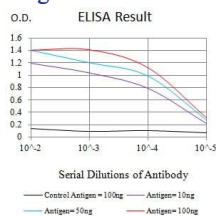
Recommended Dilution

WB: 1:500 - 1:2000

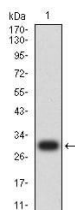
ELISA: 1:10000

Not yet tested in other applications.

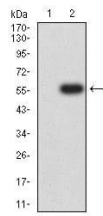
Images



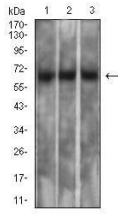
Black line: Control Antigen (100 ng);Purple line: Antigen (10ng); Blue line: Antigen (50 ng); Red line:Antigen (100 ng)



Western blot analysis using MSLN mAb against human MSLN (AA: 296-606) recombinant protein. (Expected MW is 30.5 kDa)



Western blot analysis using MSLN mAb against HEK293 (1) and MSLN (AA: 296-606)-hlgGfFc transfected HEK293 (2) cell lysate.



Western blot analysis using MSLN mouse mAb against PC-3 (1), SK-MES-1 (2), and CHO3D10 (3) cell lysate.

Storage

Store at 4°C short term. Aliquot and store at -20°C long term.

501 Changsheng S Rd, Nanhu Dist, Jiaxing, Zhejiang, China

Tel: 86 21 31007137 | E-mail: save@bt-laboratory.com | www.bt-laboratory.com