

AKT1S1 Monoclonal Antibody

Description

Product type	Antibody
Code	BT-MCA3742
Host	Mouse
Isotype	Mouse IgG1
Size	100µL, 50µL
Immunogen	Purified recombinant fragment of human AKT1S1 (AA: 92-276) expressed in E. Coli.
Mol wt	27.4kDa
Species reactivity	Others
Clonality	Monoclonal
Recommended application	FCM
Concentration	N/A
Full name	N/A
Synonyms	Lobe;PRAS40

This product is for research use only, not for use in human, therapeutic or diagnostic procedure.

Background

AKT1S1 is a proline-rich substrate of AKT (MIM 164730) that binds 14-3-3 protein (see YWHAH, MIM 113508) when phosphorylated (Kovacina et al., 2003 [PubMed 12524439]).[supplied by OMIM, Mar 2008]

Recommended Dilution

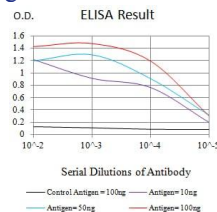
WB: 1:500 - 1:2000

FCM: 1:200 - 1:400

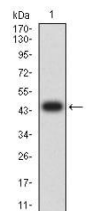
ELISA: 1:10000

Not yet tested in other applications.

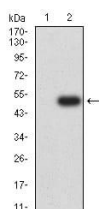
Images



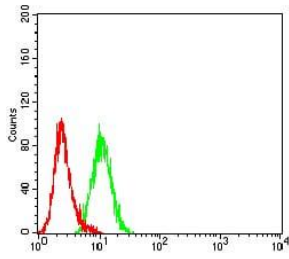
Black line: Control Antigen (100 ng);Purple line: Antigen (10ng); Blue line: Antigen (50 ng); Red line:Antigen (100 ng)



Western blot analysis using AKT1S1 mAb against human AKT1S1 (AA: 92-276) recombinant protein. (Expected MW is 45.9 kDa)



Western blot analysis using AKT1S1 mAb against HEK293 (1) and AKT1S1 (AA: 92-276)-hlgGFc transfected HEK293 (2) cell lysate.



Flow cytometric analysis of HeLa cells using AKT1S1 mouse mAb (green) and negative control (red).

Storage

Store at 4°C short term. Aliquot and store at -20°C long term.

501 Changsheng S Rd, Nanhu Dist, Jiaxing, Zhejiang, China

Tel: 86 21 31007137 | E-mail: save@bt-laboratory.com | www.bt-laboratory.com