

PPP2R4 Monoclonal Antibody

Description

Product type	Antibody
Code	BT-MCA3750
Host	Mouse
Isotype	Mouse IgG1
Size	100µL, 50µL
Immunogen	Purified recombinant fragment of human PPP2R4 expressed in E. Coli.
Mol wt	41kDa
Species reactivity	Human
Clonality	Monoclonal
Recommended application	IHC,ICC,FCM
Concentration	N/A
Full name	N/A
Synonyms	PP2A;PR53;PTPA

This product is for research use only, not for use in human, therapeutic or diagnostic procedure.

Background

Protein phosphatase 2A is one of the four major Ser/Thr phosphatases and is implicated in the negative control of cell growth and division. Protein phosphatase 2A holoenzymes are heterotrimeric proteins composed of a structural subunit A, a catalytic subunit C, and a regulatory subunit B. The regulatory subunit is encoded by a diverse set of genes that have been grouped into the B/PR55, B'/PR61, and B''/PR72 families. These different regulatory subunits confer distinct enzymatic specificities and intracellular localizations to the holoenzyme. The product of this gene belongs to the B' family. This gene encodes a specific phosphotyrosyl phosphatase activator of the dimeric form of protein phosphatase 2A. Alternative splicing results in multiple transcript variants encoding different isoforms.

Recommended Dilution

WB: 1:500 - 1:2000

IHC-p: 1:200 - 1:1000

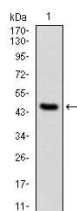
ICC: 1:200 - 1:1000

FCM: 1:200 - 1:400

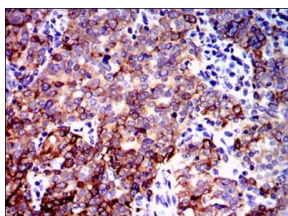
ELISA: 1:10000

Not yet tested in other applications.

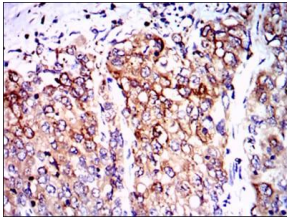
Images



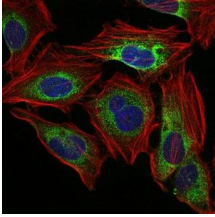
Western blot analysis using PPP2R4 mAb against human PPP2R4 (AA: 1-154) recombinant protein.
(Expected MW is 41 kDa)



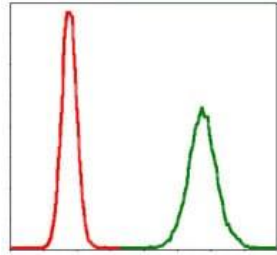
Immunohistochemical analysis of paraffin-embedded cervical cancer tissues using PPP2R4 mouse mAb with DAB staining.



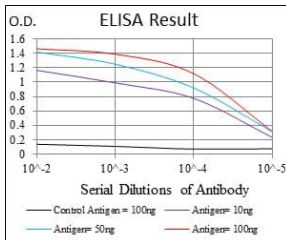
Immunohistochemical analysis of paraffin-embedded lung cancer tissues using PPP2R4 mouse mAb with DAB staining.



Immunofluorescence analysis of Hela cells using PPP2R4 mouse mAb (green). Blue: DRAQ5 fluorescent DNA dye. Red: Actin filaments have been labeled with Alexa Fluor-555 phalloidin.



Flow cytometric analysis of MCF-7 cells using PPP2R4 mouse mAb (green) and negative control (red).



Black line: Control Antigen (100 ng); Purple line: Antigen(10ng); Blue line: Antigen (50 ng); Red line: Antigen (100 ng);

Storage

Store at 4°C short term. Aliquot and store at -20°C long term.

501 Changsheng S Rd, Nanhu Dist, Jiaxing, Zhejiang, China

Tel: 86 21 31007137 | E-mail: save@bt-laboratory.com | www.bt-laboratory.com