

## Tlr2 Monoclonal Antibody

### Description

|                                |   |
|--------------------------------|---|
| <b>Product type</b>            | Antibody  |
| <b>Code</b>                    | BT-MCA3754  |
| <b>Host</b>                    | Mouse   |
| <b>Isotype</b>                 | Mouse IgG1  |
| <b>Size</b>                    | 100μL, 50μL   |
| <b>Immunogen</b>               | Purified recombinant fragment of mouse Tlr2 (AA: 628-777) expressed in E. Coli. |
| <b>Mol wt</b>                  | 90kDa   |
| <b>Species reactivity</b>      | Human   |
| <b>Clonality</b>               | Monoclonal  |
| <b>Recommended application</b> | ICC   |
| <b>Concentration</b>           | N/A   |
| <b>Full name</b>               | N/A   |
| <b>Synonyms</b>                | Ly105   |

This product is for research use only, not for use in human, therapeutic or diagnostic procedure.

### Background

N/A

### Recommended Dilution

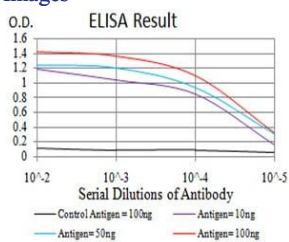
WB: 1:500 - 1:2000

ICC: 1:200 - 1:1000

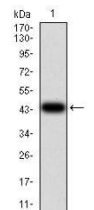
ELISA: 1:10000

Not yet tested in other applications.

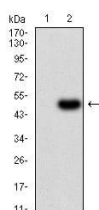
### Images



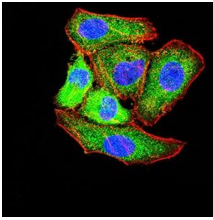
Black line: Control Antigen (100 ng);Purple line: Antigen (10ng); Blue line: Antigen (50 ng); Red line:Antigen (100 ng)



Western blot analysis using Tlr2 mAb against mouse Tlr2 (AA: 628-777) recombinant protein. (Expected MW is 44 kDa)



Western blot analysis using Tlr2 mAb against HEK293 (1) and Tlr2 (AA: 628-777)-hIgGFc transfected HEK293 (2) cell lysate.



Immunofluorescence analysis of HepG2 cells using Tlr2 mouse mAb (green). Blue: DRAQ5 fluorescent DNA dye. Red: Actin filaments have been labeled with Alexa Fluor- 555 phalloidin. Secondary antibody from Fisher (Cat#: 35503)

### Storage

Store at 4°C short term. Aliquot and store at -20°C long term.

501 Changsheng S Rd, Nanhu Dist, Jiaxing, Zhejiang, China

Tel: 86 21 31007137 | E-mail: [save@bt-laboratory.com](mailto:save@bt-laboratory.com) | [www.bt-laboratory.com](http://www.bt-laboratory.com)