

NPM3 Monoclonal Antibody

Description

Product type	Antibody
Code	BT-MCA3758
Host	Mouse
Isotype	Mouse IgG1
Size	100µL, 50µL
Immunogen	Purified recombinant fragment of human NPM3 (AA: full 1-178) expressed in E. Coli.
Mol wt	19kDa
Species reactivity	Human,Mouse
Clonality	Monoclonal
Recommended application	IHC,ICC,FCM
Concentration	N/A
Full name	N/A
Synonyms	PORMIN;TMEM123

This product is for research use only, not for use in human, therapeutic or diagnostic procedure.

Background

The protein encoded by this gene is related to the nuclear chaperone phosphoproteins, nucleoplasm and nucleophosmin. This protein is strongly expressed in diverse cell types where it localizes primarily to the nucleus. Based on its similarity to nucleoplasm and nucleophosmin, this protein likely functions as a molecular chaperone in the cell nucleus.

Recommended Dilution

WB: 1:500 - 1:2000

IHC-p: 1:200 - 1:1000

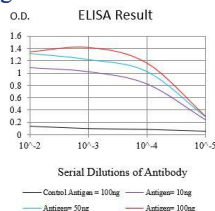
ICC: 1:50 - 1:200

FCM: 1:200 - 1:400

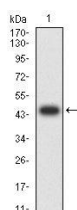
ELISA: 1:10000

Not yet tested in other applications.

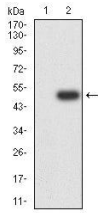
Images



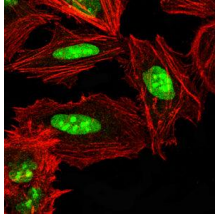
Black line: Control Antigen (100 ng);Purple line: Antigen (10ng); Blue line: Antigen (50 ng); Red line:Antigen (100 ng)



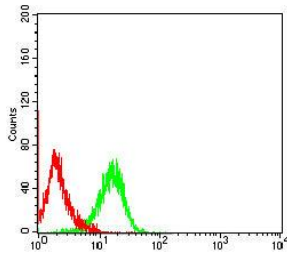
Western blot analysis using NPM3 mAb against human NPM3 (AA: full 1-178) recombinant protein. (Expected MW is 45.3 kDa)



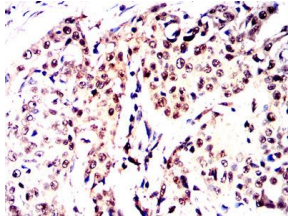
Western blot analysis using NPM3 mAb against HEK293-6e (1) and NPM3(AA:full 1-178)-hlgGFc transfected HEK293-6e (2) cell lysate.



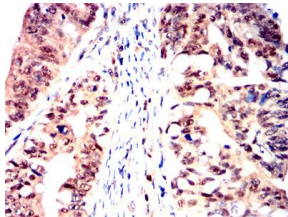
Immunofluorescence analysis of HeLa cells using NPM3 mouse mAb (green). Blue: DRAQ5 fluorescent DNA dye. Red: Actin filaments have been labeled with Alexa Fluor-555 phalloidin. Secondary antibody from Fisher (Cat#: 35503)



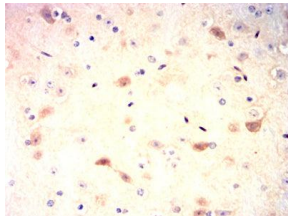
Flow cytometric analysis of HeK293 cells using NPM3 mouse mAb (green) and negative control (red).



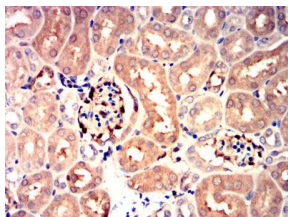
Immunohistochemical analysis of paraffin-embedded esophageal cancer tissues using NPM3 mouse mAb with DAB staining.



Immunohistochemical analysis of paraffin-embedded rectum cancer tissues using NPM3 mouse mAb with DAB staining.



Immunohistochemical analysis of paraffin-embedded mouse brain tissues using NPM3 mouse mAb with DAB staining.



Immunohistochemical analysis of paraffin-embedded mouse kidney tissues using NPM3 mouse mAb with DAB staining.

Storage

Store at 4°C short term. Aliquot and store at -20°C long term.

501 Changsheng S Rd, Nanhu Dist, Jiaxing, Zhejiang, China

Tel: 86 21 31007137 | E-mail: save@bt-laboratory.com | www.bt-laboratory.com