

RF1 Monoclonal Antibody

Description

Product type	Antibody
Code	BT-MCA3773
Host	Mouse
Isotype	Mouse IgG1
Size	100µL, 50µL
Immunogen	Purified recombinant fragment of human RF1 (AA: 288-437) expressed in E. Coli.
Mol wt	49kDa
Species reactivity	Human
Clonality	Monoclonal
Recommended application	WB,FCM
Concentration	N/A
Full name	N/A
Synonyms	ERF;ETF1;ERF1;TB3-1;D5S1995;SUP45L1

This product is for research use only, not for use in human, therapeutic or diagnostic procedure.

Background

N/A

Recommended Dilution

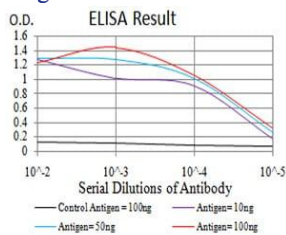
WB: 1:500 - 1:2000

FCM: 1:200 - 1:400

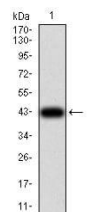
ELISA: 1:10000

Not yet tested in other applications.

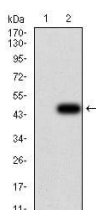
Images



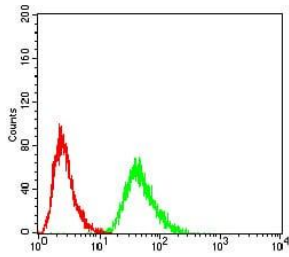
Black line: Control Antigen (100 ng);Purple line: Antigen (10ng); Blue line: Antigen (50 ng); Red line:Antigen (100 ng)



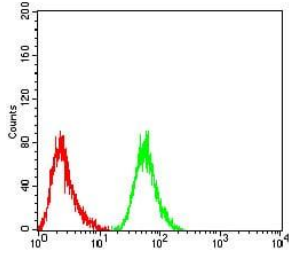
Western blot analysis using RF1 mAb against human RF1 (AA: 288-437) recombinant protein. (Expected MW is 43 kDa)



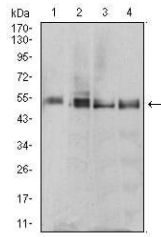
Western blot analysis using RF1 mAb against HEK293 (1) and RF1 (AA: 288-437)-hIgGFc transfected HEK293 (2) cell lysate.



Flow cytometric analysis of HeLa cells using RF1 mouse mAb (green) and negative control (red).



Flow cytometric analysis of HepG2 cells using RF1 mouse mAb (green) and negative control (red).



Western blot analysis using RF1 mouse mAb against MCF-7 (1), T47D (2), MOLT4 (3), and Raji (4) cell lysate.

Storage

Store at 4°C short term. Aliquot and store at -20°C long term.

501 Changsheng S Rd, Nanhu Dist, Jiaxing, Zhejiang, China

Tel: 86 21 31007137 | E-mail: save@bt-laboratory.com | www.bt-laboratory.com