

human Albumin Monoclonal Antibody

Description

Product type	Antibody
Code	BT-MCA3786
Host	Mouse
Isotype	Mouse IgG1
Size	100 μ L, 50 μ L
Immunogen	Human sera albumin.
Mol wt	69kDa
Species reactivity	Human
Clonality	Monoclonal
Recommended application	WB
Concentration	N/A
Full name	N/A
Synonyms	PRO0883;PRO0903;PRO1341

This product is for research use only, not for use in human, therapeutic or diagnostic procedure.

Background

Albumin is a soluble, monomeric protein which comprises about one-half of the blood serum protein. Albumin functions primarily as a carrier protein for steroids, fatty acids, and thyroid hormones and plays a role in stabilizing extracellular fluid volume. Albumin is a globular unglycosylated serum protein of molecular weight 65,000. Albumin is synthesized in the liver as preproalbumin which has an N-terminal peptide that is removed before the nascent protein is released from the rough endoplasmic reticulum. The product, proalbumin, is in turn cleaved in the Golgi vesicles to produce the secreted albumin.

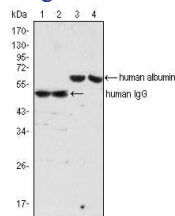
Recommended Dilution

WB: 1:500 - 1:2000

ELISA: 1:10000

Not yet tested in other applications.

Images



Western blot analysis using human Albumin mouse mAb (lane 3, 4) and human IgG mouse mAb(lane 1, 2) against human serum (lane 1, 3) and plasma (lane 2, 4).

Storage

Store at 4°C short term. Aliquot and store at -20°C long term.