

KRT18 Monoclonal Antibody

Description

Product type	Antibody
Code	BT-MCA3788
Host	Mouse
Isotype	Mouse IgG1
Size	100µL, 50µL
Immunogen	Purified recombinant fragment of human KRT18 (AA: 1-150) expressed in E. Coli.
Mol wt	48kDa
Species reactivity	Others
Clonality	Monoclonal
Recommended application	WB,IHC,ICC,FCM
Concentration	N/A
Full name	N/A
Synonyms	K18;CK-18;CYK18

This product is for research use only, not for use in human, therapeutic or diagnostic procedure.

Background

KRT18 encodes the type I intermediate filament chain keratin 18. Keratin 18, together with its filament partner keratin 8, are perhaps the most commonly found members of the intermediate filament gene family. They are expressed in single layer epithelial tissues of the body.

Mutations in this gene have been linked to cryptogenic cirrhosis. Two transcript variants encoding the same protein have been found for this gene.

Recommended Dilution

WB: 1:500 - 1:2000

IHC-p: 1:200 - 1:1000

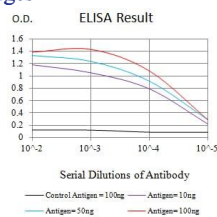
ICC: 1:500 - 1:2000

FCM: 1:200 - 1:400

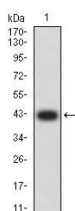
ELISA: 1:10000

Not yet tested in other applications.

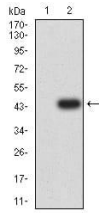
Images



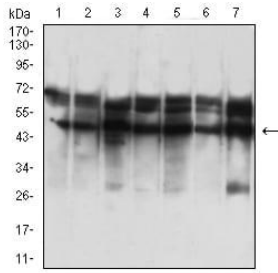
Black line: Control Antigen (100 ng);Purple line: Antigen (10ng); Blue line: Antigen (50 ng); Red line:Antigen (100 ng)



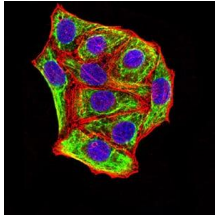
Western blot analysis using KRT18 mAb against human KRT18 (AA: 1-150) recombinant protein. (Expected MW is 42.1 kDa)



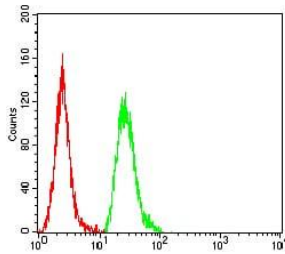
Western blot analysis using KRT18 mAb against HEK293 (1) and KRT18 (AA: 1-150)-hIgGFc transfected HEK293 (2) cell lysate.



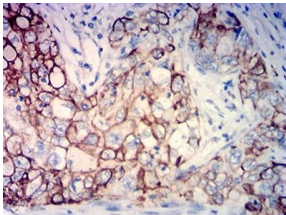
Western blot analysis using KRT18 mouse mAb against SK-BR-3 (1), HepG2 (2), T47D (3), MCF-7 (4), HeLa (5), A431 (6), and HCT116 (7) cell lysate.



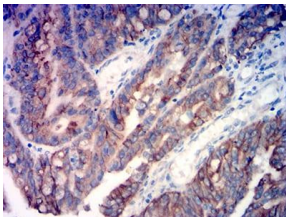
Immunofluorescence analysis of HeLa cells using KRT18 mouse mAb (green). Blue: DRAQ5 fluorescent DNA dye. Red: Actin filaments have been labeled with Alexa Fluor-555 phalloidin. Secondary antibody from Fisher (Cat#: 35503)



Flow cytometric analysis of HeLa cells using KRT18 mouse mAb (green) and negative control (red).



Immunohistochemical analysis of paraffin-embedded lung cancer tissues using KRT18 mouse mAb with DAB staining.



Immunohistochemical analysis of paraffin-embedded rectum cancer tissues using KRT18 mouse mAb with DAB staining.

Storage

Store at 4°C short term. Aliquot and store at -20°C long term.

501 Changsheng S Rd, Nanhu Dist, Jiaxing, Zhejiang, China

Tel: 86 21 31007137 | E-mail: save@bt-laboratory.com | www.bt-laboratory.com