

EphB2 Monoclonal Antibody

Description

Product type	Antibody
Code	BT-MCA3800
Host	Mouse
Isotype	Mouse IgG2b
Size	100μL, 50μL
Immunogen	Purified recombinant fragment of EphB2 (aa17-200) expressed in E. Coli.
Mol wt	N/A
Species reactivity	Human
Clonality	Monoclonal
Recommended application	ICC
Concentration	N/A
Full name	N/A
Synonyms	DRT;ERK;CAPB;Hek5

This product is for research use only, not for use in human, therapeutic or diagnostic procedure.

Background

EphB2: EPH receptor B2. Ephrin receptors and their ligands, the ephrins, mediate numerous developmental processes, particularly in the nervous system. Based on their structures and sequence relationships, ephrins are divided into the ephrin-A (EFNA) class, which are anchored to the membrane by a glycosylphosphatidylinositol linkage, and the ephrin-B (EFNB) class, which are transmembrane proteins. The Eph family of receptors are divided into 2 groups based on the similarity of their extracellular domain sequences and their affinities for binding ephrin-A and ephrin-B ligands. Ephrin receptors make up the largest subgroup of the receptor tyrosine kinase (RTK) family. The protein encoded by this gene is a receptor for ephrin-B family members.

Recommended Dilution

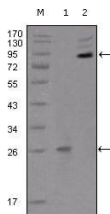
WB: 1:500 - 1:2000

ICC: 1:200 - 1:1000

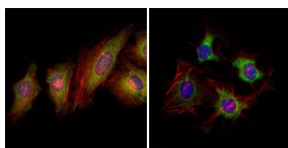
ELISA: 1:10000

Not yet tested in other applications.

Images



Western blot analysis using EphB2 mouse mAb against truncated EphB2 recombinant protein (1) and extracellular EphB2(aa19-476)-hIgGFc transfected CHO-K1 cell lysate(2).



Immunofluorescence analysis of HeLa (left) and HepG2 (right) cells using EphB2 mouse mAb (green). Red: Actin filaments have been labeled with DY-554 phalloidin. Blue: DRAQ5 fluorescent DNA dye.

Storage

Store at 4°C short term. Aliquot and store at -20°C long term.

501 Changsheng S Rd, Nanhu Dist, Jiaxing, Zhejiang, China

Tel: 86 21 31007137 | E-mail: save@bt-laboratory.com | www.bt-laboratory.com