

PPP1A Monoclonal Antibody

Description

Product type	Antibody
Code	BT-MCA3805
Host	Mouse
Isotype	Mouse IgG1
Size	100µL, 50µL
Immunogen	Purified recombinant fragment of human PPP1A expressed in E. Coli.
Mol wt	38kDa
Species reactivity	Human,Mouse
Clonality	Monoclonal
Recommended application	WB
Concentration	N/A
Full name	N/A
Synonyms	PP-1A;PPP1A;MGC1674;MGC15877;PP1alpha;PPP1CA

This product is for research use only, not for use in human, therapeutic or diagnostic procedure.

Background

The protein encoded by this gene is one of the three catalytic subunits of protein phosphatase 1 (PP1). PP1 is a serine/threonine specific protein phosphatase known to be involved in the regulation of a variety of cellular processes, such as cell division, glycogen metabolism, muscle contractility, protein synthesis, and HIV-1 viral transcription. Increased PP1 activity has been observed in the end stage of heart failure. Studies in both human and mice suggest that PP1 is an important regulator of cardiac function. Mouse studies also suggest that PP1 functions as a suppressor of learning and memory. Three alternatively spliced transcript variants encoding different isoforms have been found for this gene.

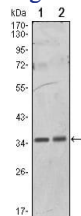
Recommended Dilution

WB: 1:500 - 1:2000

ELISA: 1:10000

Not yet tested in other applications.

Images



Western blot analysis using PPP1A mouse mAb against Hela (1) and NIH/3T3 (2) cell lysate.

Storage

Store at 4°C short term. Aliquot and store at -20°C long term.