

KRT10 Monoclonal Antibody

Description

Product type	Antibody
Code	BT-MCA3809
Host	Mouse
Isotype	Mouse IgG1
Size	100µL, 50µL
Immunogen	Purified recombinant fragment of human KRT10 (AA: 146-455) expressed in E. Coli.
Mol wt	58.8kDa
Species reactivity	Others
Clonality	Monoclonal
Recommended application	WB,FCM
Concentration	N/A
Full name	N/A
Synonyms	BIE;EHK;K10;KPP;BCIE;CK10

This product is for research use only, not for use in human, therapeutic or diagnostic procedure.

Background

This gene encodes a member of the type I (acidic) cytokeratin family, which belongs to the superfamily of intermediate filament (IF) proteins. Keratins are heteropolymeric structural proteins which form the intermediate filament. These filaments, along with actin microfilaments and microtubules, compose the cytoskeleton of epithelial cells. Mutations in this gene are associated with epidermolytic hyperkeratosis. This gene is located within a cluster of keratin family members on chromosome 17q21.

Recommended Dilution

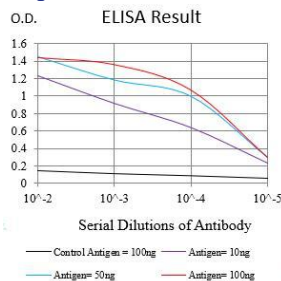
WB: 1:500 - 1:2000

FCM: 1:200 - 1:400

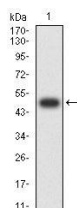
ELISA: 1:10000

Not yet tested in other applications.

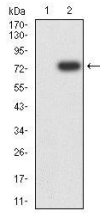
Images



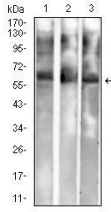
Black line: Control Antigen (100 ng);Purple line: Antigen (10ng); Blue line: Antigen (50 ng); Red line:Antigen (100 ng)



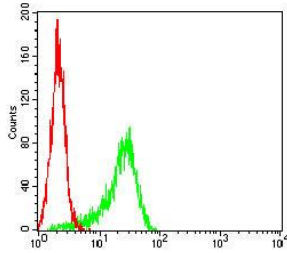
Western blot analysis using KRT10 mAb against human KRT10 (AA: 146-455) recombinant protein. (Expected MW is 49.1 kDa)



Western blot analysis using KRT10 mAb against HEK293-6e (1) and KRT10 (AA: 146-455)-hIgGFc transfected HEK293-6e (2) cell lysate.



Western blot analysis using KRT10 mouse mAb against A431 (1), PC-12 (2), and C6 (3) cell lysate.



Flow cytometric analysis of HeLa cells using KRT10 mouse mAb (green) and negative control (red).

Storage

Store at 4°C short term. Aliquot and store at -20°C long term.

501 Changsheng S Rd, Nanhu Dist, Jiaxing, Zhejiang, China

Tel: 86 21 31007137 | E-mail: save@bt-laboratory.com | www.bt-laboratory.com