

ALPG Monoclonal Antibody

Description

Product type	Antibody
Code	BT-MCA3817
Host	Mouse
Isotype	Mouse IgG2b
Size	100µL, 50µL
Immunogen	Purified recombinant fragment of human ALPG (AA: 170-285) expressed in E. Coli.
Mol wt	57.3kDa
Species reactivity	N/A
Clonality	Monoclonal
Recommended application	WB,IHC,ICC,FCM
Concentration	N/A
Full name	N/A
Synonyms	GCAP;ALPPL;ALPPL2

This product is for research use only, not for use in human, therapeutic or diagnostic procedure.

Background

There are at least four distinct but related alkaline phosphatases: intestinal, placental, placental-like, and liver/bone/kidney (tissue non-specific). The product of this gene is a membrane bound glycosylated enzyme, localized to testis, thymus and certain germ cell tumors, that is closely related to both the placental and intestinal forms of alkaline phosphatase.

Recommended Dilution

WB: 1:500 - 1:2000

IHC-p: 1:200 - 1:1000

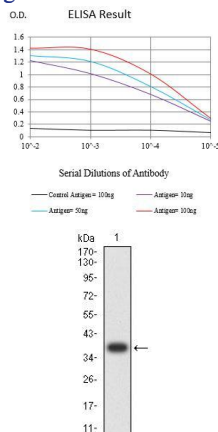
ICC: 1:50 - 1:200

FCM: 1:200 - 1:400

ELISA: 1:10000

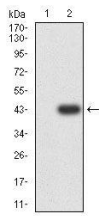
Not yet tested in other applications.

Images

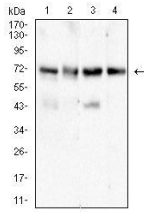


Black line: Control Antigen (100 ng);Purple line: Antigen (10ng); Blue line: Antigen (50 ng); Red line:Antigen (100 ng)

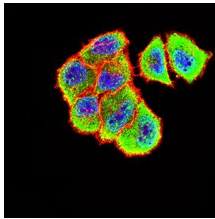
Western blot analysis using ALPG mAb against human ALPG (AA: 170-285) recombinant protein. (Expected MW is 38.8 kDa)



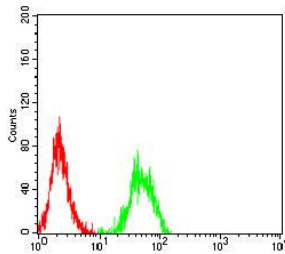
Western blot analysis using ALPG mAb against HEK293-6e (1) and ALPG (AA: 170-285)-hIgGFc transfected HEK293-6e (2) cell lysate.



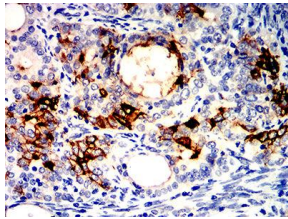
Western blot analysis using ALPG mouse mAb against SK-OV-3 (1), HeLa (2), HepG2 (3), and A431 (4) cell lysate.



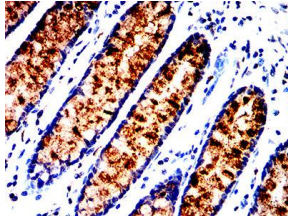
Immunofluorescence analysis of HeLa cells using ALPG mouse mAb (green). Blue: DRAQ5 fluorescent DNA dye. Red: Actin filaments have been labeled with Alexa Fluor-555 phalloidin. Secondary antibody from Fisher (Cat#: 35503)



Flow cytometric analysis of Jurkat cells using ALPG mouse mAb (green) and negative control (red).



Immunohistochemical analysis of paraffin-embedded cervical cancer tissues using ALPG mouse mAb with DAB staining.



Immunohistochemical analysis of paraffin-embedded rectum cancer tissues using ALPG mouse mAb with DAB staining.

Storage

Store at 4°C short term. Aliquot and store at -20°C long term.

501 Changsheng S Rd, Nanhu Dist, Jiaxing, Zhejiang, China

Tel: 86 21 31007137 | E-mail: save@bt-laboratory.com | www.bt-laboratory.com