

CD302 Monoclonal Antibody

Description

Product type	Antibody
Code	BT-MCA3819
Host	Mouse
Isotype	Mouse IgG1
Size	100µL, 50µL
Immunogen	Purified recombinant fragment of human CD302 (AA: extra 23-168) expressed in E. Coli.
Mol wt	26.2kDa
Species reactivity	Human
Clonality	Monoclonal
Recommended application	Others
Concentration	N/A
Full name	N/A
Synonyms	DCL1;DCL-1;BIMLEC;CLEC13A

This product is for research use only, not for use in human, therapeutic or diagnostic procedure.

Background

CD302 is a C-type lectin receptor involved in cell adhesion and migration, as well as endocytosis and phagocytosis

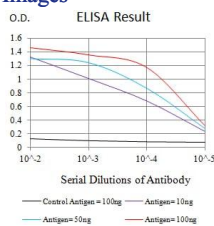
Recommended Dilution

WB: 1:500 - 1:2000

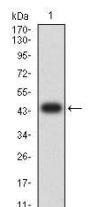
ELISA: 1:10000

Not yet tested in other applications.

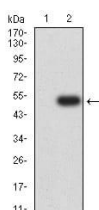
Images



Black line: Control Antigen (100 ng);Purple line: Antigen (10ng); Blue line: Antigen (50 ng); Red line:Antigen (100 ng)



Western blot analysis using CD302 mAb against human CD302 (AA: extra 23-168) recombinant protein. (Expected MW is 46.8 kDa)



Western blot analysis using CD302 mAb against HEK293 (1) and CD302 (AA: extra 23-168)-hlgGfC transfected HEK293 (2) cell lysate.

Storage

Store at 4°C short term. Aliquot and store at -20°C long term.

501 Changsheng S Rd, Nanhu Dist, Jiaxing, Zhejiang, China

Tel: 86 21 31007137 | E-mail: save@bt-laboratory.com | www.bt-laboratory.com