

## CD79A Monoclonal Antibody

### Description

<b>Product type</b>	Antibody
<b>Code</b>	BT-MCA3839
<b>Host</b>	Mouse
<b>Isotype</b>	Mouse IgG1
<b>Size</b>	100µL, 50µL
<b>Immunogen</b>	Purified recombinant fragment of human CD79A (AA: extra 33-143) expressed in E. Coli.
<b>Mol wt</b>	25KDa
<b>Species reactivity</b>	Human
<b>Clonality</b>	Monoclonal
<b>Recommended application</b>	IHC,ICC,FCM
<b>Concentration</b>	N/A
<b>Full name</b>	N/A
<b>Synonyms</b>	IGA;MB-1

This product is for research use only, not for use in human, therapeutic or diagnostic procedure.

### Background

The B lymphocyte antigen receptor is a multimeric complex that includes the antigen-specific component, surface immunoglobulin (Ig). Surface Ig non-covalently associates with two other proteins, Ig-alpha and Ig-beta, which are necessary for expression and function of the B-cell antigen receptor. This gene encodes the Ig-alpha protein of the B-cell antigen component. Alternatively spliced transcript variants encoding different isoforms have been described.

### Recommended Dilution

WB: 1:500 - 1:2000

IHC-p: 1:200 - 1:1000

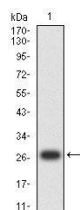
ICC: 1:200 - 1:1000

FCM: 1:200 - 1:400

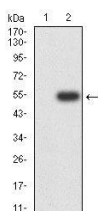
ELISA: 1:10000

Not yet tested in other applications.

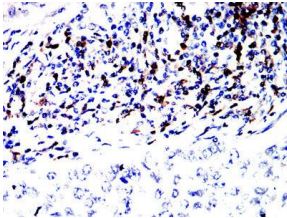
### Images



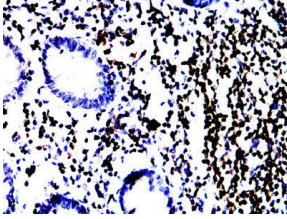
Western blot analysis using CD79A mAb against human CD79A (AA: extra 33-143) recombinant protein. (Expected MW is 28.3 kDa)



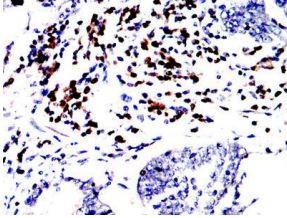
Western blot analysis using CD79A mAb against HEK293-6e(1) and CD79A (AA: extra 33-143)-hIgGFc transfected HEK293-6e (2) cell lysate.



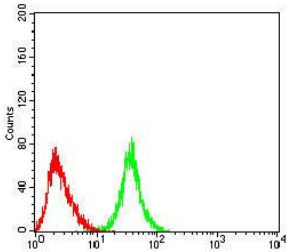
Immunohistochemical analysis of paraffin-embedded lung cancer tissues using CD79A mouse mAb with DAB staining.



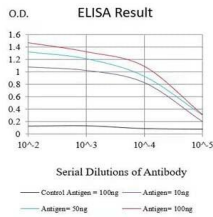
Immunohistochemical analysis of paraffin-embedded Colonic tissue tissues using CD79A mouse mAb with DAB staining.



Immunohistochemical analysis of paraffin-embedded esophageal cancer tissues using CD79A mouse mAb with DAB staining.



Flow cytometric analysis of Raji cells using CD79A mouse mAb (green) and negative control (red).



Black line: Control Antigen (100 ng);Purple line: Antigen (10ng); Blue line: Antigen (50 ng); Red line:Antigen (100 ng)

## Storage

Store at 4°C short term. Aliquot and store at -20°C long term.

501 Changsheng S Rd, Nanhu Dist, Jiaxing, Zhejiang, China

Tel: 86 21 31007137 | E-mail: [save@bt-laboratory.com](mailto:save@bt-laboratory.com) | [www.bt-laboratory.com](http://www.bt-laboratory.com)