

CD163 Monoclonal Antibody

Description

Product type	Antibody
Code	BT-MCA3846
Host	Mouse
Isotype	Mouse IgG1
Size	100µL, 50µL
Immunogen	Purified recombinant fragment of human CD163 (AA: extra 42-259) expressed in E. Coli.
Mol wt	125.4kDa
Species reactivity	Others
Clonality	Monoclonal
Recommended application	WB,IHC,FCM
Concentration	N/A
Full name	N/A
Synonyms	M130;MM130;SCARI1

This product is for research use only, not for use in human, therapeutic or diagnostic procedure.

Background

The protein encoded by this gene is a member of the scavenger receptor cysteine-rich (SRCR) superfamily, and is exclusively expressed in monocytes and macrophages. It functions as an acute phase-regulated receptor involved in the clearance and endocytosis of hemoglobin/haptoglobin complexes by macrophages, and may thereby protect tissues from free hemoglobin-mediated oxidative damage. This protein may also function as an innate immune sensor for bacteria and inducer of local inflammation. Alternatively spliced transcript variants encoding different isoforms have been described for this gene.

Recommended Dilution

WB: 1:500 - 1:2000

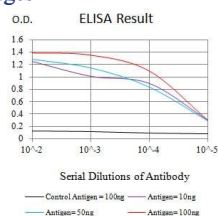
IHC-p: 1:200 - 1:1000

FCM: 1:200 - 1:400

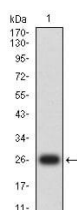
ELISA: 1:10000

Not yet tested in other applications.

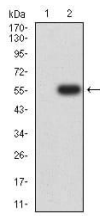
Images



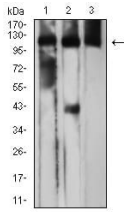
Black line: Control Antigen (100 ng); Purple line: Antigen (10ng); Blue line: Antigen (50 ng); Red line: Antigen (100 ng)



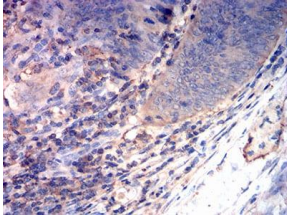
Western blot analysis using CD163 mAb against human CD163 (AA: extra 42-259) recombinant protein. (Expected MW is 26.4 kDa)



Western blot analysis using CD163 mAb against HEK293 (1) and CD163 (AA: extra 42-259)-hlgGFc transfected HEK293 (2) cell lysate.



Western blot analysis using CD163 mouse mAb against Raw264.7 (1), NIH/3T3 (2), and HL-60 (3) cell lysate.



Immunohistochemical analysis of paraffin-embedded rectum cancer tissues using CD163 mouse mAb with DAB staining.

Storage

Store at 4°C short term. Aliquot and store at -20°C long term.

501 Changsheng S Rd, Nanhu Dist, Jiaxing, Zhejiang, China

Tel: 86 21 31007137 | E-mail: save@bt-laboratory.com | www.bt-laboratory.com