

SLC7A3 Monoclonal Antibody

Description

Product type	Antibody
Code	BT-MCA3862
Host	Mouse
Isotype	Mouse IgG1
Size	100µL, 50µL
Immunogen	Purified recombinant fragment of human SLC7A3 (AA: extra mix) expressed in E. Coli.
Mol wt	67.1kDa
Species reactivity	Human,Mouse,Rat
Clonality	Monoclonal
Recommended application	WB,IHC,FCM
Concentration	N/A
Full name	N/A
Synonyms	CAT3;ATRC3;CAT-3

This product is for research use only, not for use in human, therapeutic or diagnostic procedure.

Background

This gene encodes a member of the solute carrier family 7. The encoded protein is a sodium-independent cationic amino acid transporter. Alternate splicing results in multiple transcripts that encoded the same protein.

Recommended Dilution

WB: 1:500 - 1:2000

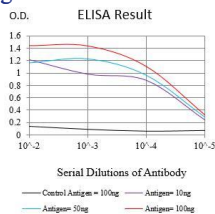
IHC-p: 1:200 - 1:1000

FCM: 1:200 - 1:400

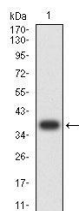
ELISA: 1:10000

Not yet tested in other applications.

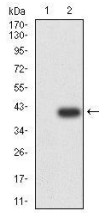
Images



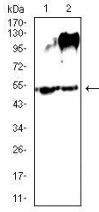
Black line: Control Antigen (100 ng);Purple line: Antigen (10ng); Blue line: Antigen (50 ng); Red line:Antigen (100 ng)



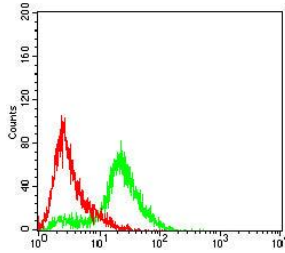
Western blot analysis using SLC7A3 mAb against human SLC7A3 (AA: extra mix) recombinant protein. (Expected MW is 38.3 kDa)



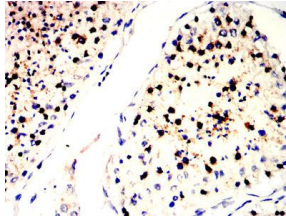
Western blot analysis using SLC7A3 mAb against HEK293-6e (1) and SLC7A3 (AA: extra mix)-hlgGFc transfected HEK293-6e (2) cell lysate.



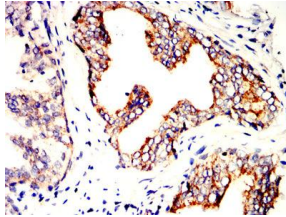
Western blot analysis using SLC7A3 mouse mAb against Mouse Lung (1) and Rat Lung (2) tissue lysate.



Flow cytometric analysis of HeLa cells using SLC7A3 mouse mAb (green) and negative control (red).



Immunohistochemical analysis of paraffin-embedded testis tissues using SLC7A3 mouse mAb with DAB staining.



Immunohistochemical analysis of paraffin-embedded prostate cancer tissues using SLC7A3 mouse mAb with DAB staining.

Storage

Store at 4°C short term. Aliquot and store at -20°C long term.

501 Changsheng S Rd, Nanhu Dist, Jiaxing, Zhejiang, China

Tel: 86 21 31007137 | E-mail: save@bt-laboratory.com | www.bt-laboratory.com