

CDH16 Monoclonal Antibody

Description

Product type	Antibody
Code	BT-MCA3873
Host	Mouse
Isotype	Mouse IgG1
Size	100µL, 50µL
Immunogen	Purified recombinant fragment of human CDH16 (AA: EX(558-721)) expressed in E. Coli.
Mol wt	90kDa
Species reactivity	Human
Clonality	Monoclonal
Recommended application	WB,IHC,ICC,FCM
Concentration	N/A
Full name	N/A
Synonyms	KSP-Cadherin

This product is for research use only, not for use in human, therapeutic or diagnostic procedure.

Background

This gene is a member of the cadherin superfamily, genes encoding calcium-dependent, membrane-associated glycoproteins. Mapped to a previously identified cluster of cadherin genes on chromosome 16q22.1, the gene localizes with superfamily members CDH1, CDH3, CDH5, CDH8 and CDH11. The protein consists of an extracellular domain containing 6 cadherin domains, a transmembrane region and a truncated cytoplasmic domain but lacks the prosequence and tripeptide HAV adhesion recognition sequence typical of most classical cadherins.

Expression is exclusively in kidney, where the protein functions as the principal mediator of homotypic cellular recognition, playing a role in the morphogenic direction of tissue development. Alternatively spliced transcript variants encoding distinct isoforms have been identified.

Recommended Dilution

WB: 1:500 - 1:2000

IHC-p: 1:200 - 1:1000

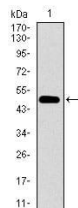
ICC: 1:200 - 1:1000

FCM: 1:200 - 1:400

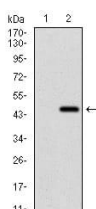
ELISA: 1:10000

Not yet tested in other applications.

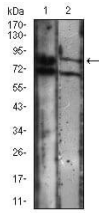
Images



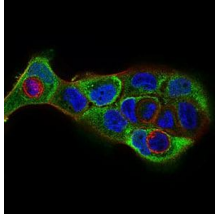
Western blot analysis using CDH16 mAb against human CDH16 (AA: EX(558-721)) recombinant protein. (Expected MW is 43.6 kDa)



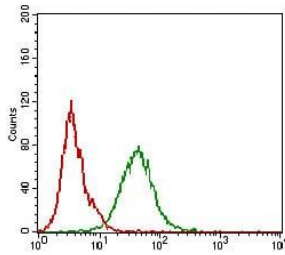
Western blot analysis using CDH16 mAb against HEK293 (1) and CDH16 (AA: EX(558-721))-hlgGfC transfected HEK293 (2) cell lysate.



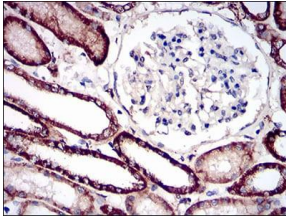
Western blot analysis using CDH16 mouse mAb against A431 (1), Jurkat (2) cell lysate.



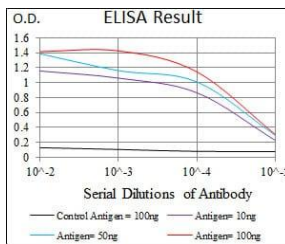
Immunofluorescence analysis of A431 cells using CDH16 mouse mAb (green). Blue: DRAQ5 fluorescent DNA dye. Red: Actin filaments have been labeled with Alexa Fluor-555 phalloidin. Secondary antibody from Fisher (Cat#: 35503)



Flow cytometric analysis of A431 cells using CDH16 mouse mAb (green) and negative control (red).



Immunohistochemical analysis of paraffin-embedded kidney tissues using CDH16 mouse mAb with DAB staining.



Black line: Control Antigen (100 ng); Purple line: Antigen(10ng); Blue line: Antigen (50 ng); Red line: Antigen (100 ng);

Storage

Store at 4°C short term. Aliquot and store at -20°C long term.

501 Changsheng S Rd, Nanhu Dist, Jiaxing, Zhejiang, China

Tel: 86 21 31007137 | E-mail: save@bt-laboratory.com | www.bt-laboratory.com