

## CD106 Monoclonal Antibody

### Description

<b>Product type</b>	Antibody
<b>Code</b>	BT-MCA3878
<b>Host</b>	Mouse
<b>Isotype</b>	Mouse IgG1
<b>Size</b>	100µL, 50µL
<b>Immunogen</b>	Purified recombinant fragment of human CD106 (AA: extra 25-183) expressed in E. Coli.
<b>Mol wt</b>	81.3kDa
<b>Species reactivity</b>	Human,Monkey
<b>Clonality</b>	Monoclonal
<b>Recommended application</b>	WB,FCM
<b>Concentration</b>	N/A
<b>Full name</b>	N/A
<b>Synonyms</b>	VCAM1;INCAM-100

This product is for research use only, not for use in human, therapeutic or diagnostic procedure.

### Background

This gene is a member of the Ig superfamily and encodes a cell surface sialoglycoprotein expressed by cytokine-activated endothelium. This type I membrane protein mediates leukocyte-endothelial cell adhesion and signal transduction, and may play a role in the development of arteriosclerosis and rheumatoid arthritis. Three alternatively spliced transcripts encoding different isoforms have been described for this gene.

### Recommended Dilution

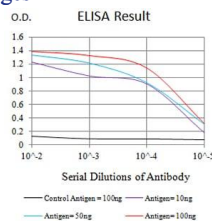
WB: 1:500 - 1:2000

FCM: 1:200 - 1:400

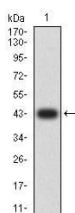
ELISA: 1:10000

Not yet tested in other applications.

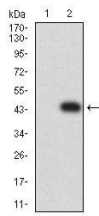
### Images



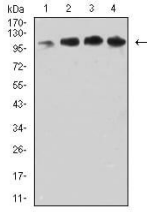
Black line: Control Antigen (100 ng);Purple line: Antigen (10ng); Blue line: Antigen (50 ng); Red line:Antigen (100 ng)



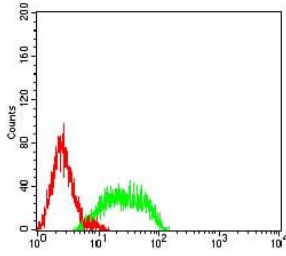
Western blot analysis using CD106 mAb against human CD106 (AA: extra 25-183) recombinant protein. (Expected MW is 43.6 kDa)



Western blot analysis using CD106 mAb against HEK293 (1) and CD106 (AA: extra 25-183)-hlgGFc transfected HEK293 (2) cell lysate.



Western blot analysis using CD106 mouse mAb against COS7 (1), MCF-7 (2), HepG2 (3), and HeLa (4) cell lysate.



Flow cytometric analysis of HL-60 cells using CD106 mouse mAb (green) and negative control (red).

### Storage

Store at 4°C short term. Aliquot and store at -20°C long term.

501 Changsheng S Rd, Nanhu Dist, Jiaxing, Zhejiang, China

Tel: 86 21 31007137 | E-mail: [save@bt-laboratory.com](mailto:save@bt-laboratory.com) | [www.bt-laboratory.com](http://www.bt-laboratory.com)