

## LIN28 Monoclonal Antibody

### Description

<b>Product type</b>	Antibody
<b>Code</b>	BT-MCA3888
<b>Host</b>	Mouse
<b>Isotype</b>	Mouse IgG1
<b>Size</b>	100µL, 50µL
<b>Immunogen</b>	Purified recombinant fragment of LIN28 (aa93-209) expressed in E. Coli.
<b>Mol wt</b>	23kDa
<b>Species reactivity</b>	Human
<b>Clonality</b>	Monoclonal
<b>Recommended application</b>	ICC
<b>Concentration</b>	N/A
<b>Full name</b>	N/A
<b>Synonyms</b>	CSDD1;LIN-28;LIN28A;ZCCHC1

This product is for research use only, not for use in human, therapeutic or diagnostic procedure.

### Background

LIN28: lin-28 homolog (*C. elegans*), also known as CSDD1, ZCCHC1. Entrez Protein NP\_078950. LIN28 was first discovered in the nematode *C. elegans*. It is a heterochronic protein in *C. elegans* involved in the timing of developmental events and choice of stage specific cell fates. LIN28 expression has been found to be regulated post-transcriptionally by miRNAs in both nematodes and mammals. In humans it is expressed in embryonic stem cells and its expression decreases during differentiation. It is negatively regulated by retinoic acid in neuronal differentiation.

### Recommended Dilution

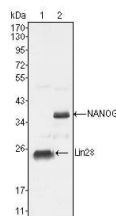
WB: 1:500 - 1:2000

ICC: 1:200 - 1:1000

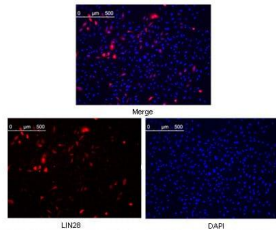
ELISA: 1:10000

Not yet tested in other applications.

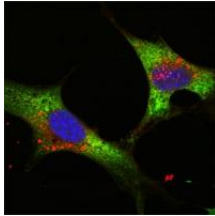
### Images



Western blot analysis using LIN28 mouse mAb against NTERA-2 cell lysate (1).



Confocal Immunofluorescence analysis of methanol fixed HeLa cells were transfected with pMX construct of human LIN28, cells were analyzed ~62 hours after transfection.



Confocal Immunofluorescence analysis of NTERA-2 cells using LIN28 mouse mAb (green). Blue: DRAQ5 fluorescent DNA dye.

### Storage

Store at 4°C short term. Aliquot and store at -20°C long term.

501 Changsheng S Rd, Nanhu Dist, Jiaxing, Zhejiang, China

Tel: 86 21 31007137 | E-mail: [save@bt-laboratory.com](mailto:save@bt-laboratory.com) | [www.bt-laboratory.com](http://www.bt-laboratory.com)