

## DLL3 Monoclonal Antibody

### Description

<b>Product type</b>	Antibody
<b>Code</b>	BT-MCA3899
<b>Host</b>	Mouse
<b>Isotype</b>	Mouse IgG2a
<b>Size</b>	100µL, 50µL
<b>Immunogen</b>	Purified recombinant fragment of human DLL3 (AA: EXTRA(27-226)) expressed in E. Coli.
<b>Mol wt</b>	65KDa
<b>Species reactivity</b>	Human,Rat
<b>Clonality</b>	Monoclonal
<b>Recommended application</b>	WB,IHC,ICC,FCM
<b>Concentration</b>	N/A
<b>Full name</b>	N/A
<b>Synonyms</b>	SCDO1

This product is for research use only, not for use in human, therapeutic or diagnostic procedure.

### Background

This gene encodes a member of the delta protein ligand family. This family functions as Notch ligands that are characterized by a DSL domain, EGF repeats, and a transmembrane domain. Mutations in this gene cause autosomal recessive spondylocostal dysostosis 1. Two transcript variants encoding distinct isoforms have been identified for this gene.

### Recommended Dilution

WB: 1:500 - 1:2000

IHC-p: 1:200 - 1:1000

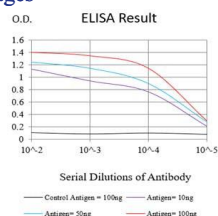
ICC: 1:200 - 1:1000

FCM: 1:200 - 1:400

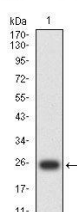
ELISA: 1:10000

Not yet tested in other applications.

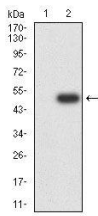
### Images



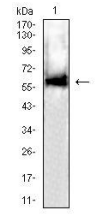
Black line: Control Antigen (100 ng);Purple line: Antigen (10ng); Blue line: Antigen (50 ng); Red line:Antigen (100 ng)



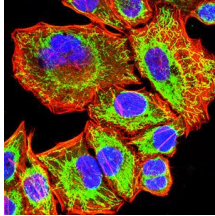
Western blot analysis using DLL3 mAb against human DLL3 (AA: EXTRA(27-226)) recombinant protein. (Expected MW is 26.5 kDa)



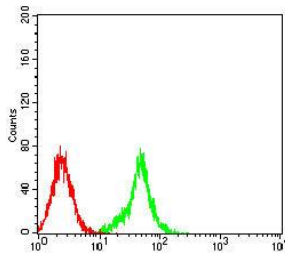
Western blot analysis using DLL3 mAb against HEK293-6e (1) and DLL3 (AA: EXTRA(27-226))-hlgGfc transfected HEK293-6e (2) cell lysate.



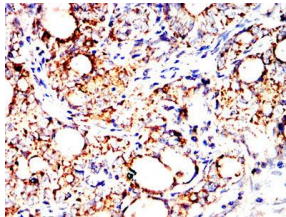
Western blot analysis using DLL3 mouse mAb against Hela (1) cell lysate.



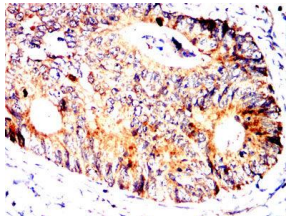
Immunofluorescence analysis of Hela cells using DLL3 mouse mAb (green). Blue: DRAQ5 fluorescent DNA dye. Red: Actin filaments have been labeled with Alexa Fluor-555 phalloidin. Secondary antibody from Fisher (Cat#: 35503)



Flow cytometric analysis of C6 cells using DLL3 mouse mAb (green) and negative control (red).



Immunohistochemical analysis of paraffin-embedded cervical carcinoma tissues using DLL3 mouse mAb with DAB staining.



Immunohistochemical analysis of paraffin-embedded rectal cancer tissues using DLL3 mouse mAb with DAB staining.

### Storage

Store at 4°C short term. Aliquot and store at -20°C long term.

501 Changsheng S Rd, Nanhu Dist, Jiaxing, Zhejiang, China

Tel: 86 21 31007137 | E-mail: [save@bt-laboratory.com](mailto:save@bt-laboratory.com) | [www.bt-laboratory.com](http://www.bt-laboratory.com)